

AFRICA'S No. 1



OFFICIAL **MEALIE BRAND** CATALOGUE



Serving Africa's Needs

Contents



The Implements

Mealie Brand Ploughs

MB200 – 300 Ploughs	4
Mealie Brand Maun Plough	4
Mealie Brand IS12 Plough	5
Mealie Brand P23 2-Furrow Plough	5

Mealie Brand Cultivators

Mealie Brand MB41 Cultivator	6
Mealie Brand MB221 Cultivator	6
Mealie Brand Maun Cultivator	7
Mealie Brand MC5 Cultivator	7
Mealie Brand CS2 & CS3 Cultivators	7

Mealie Brand Harrows

Mealie Brand Maun/Triangular Harrow	8
Mealie Brand Diamond Harrow	8
Mealie Brand Zig-Zag Harrow	8

Mealie Brand Products

Mealie Brand High Wing Ridger	9
Mealie Brand Groundnut Sheller	9
Mealie Brand Planter (Pitman Drive with Fertiliser Attachment)	10
Mealie Brand Nuts and Bolts	11

The Parts

Mealie Brand Ploughs

MB200 – 300 Ploughs	12
Mealie Brand Maun Plough	14
Mealie Brand IS12 Plough	16
Mealie Brand P23 2-Furrow Plough	18

Mealie Brand Cultivators

Mealie Brand MB41 Cultivator	22
Mealie Brand MB221 Cultivator	24
Mealie Brand Maun Cultivator	26
Mealie Brand MC5 Cultivator	28
Mealie Brand CS2 & CS3 Cultivators	30

Mealie Brand Products

Mealie Brand High Wing Ridger	34
Mealie Brand Planter (Pitman Drive with Fertiliser Attachment)	36
Mealie Brand Groundnut Sheller	40

Mealie Brand Harrows

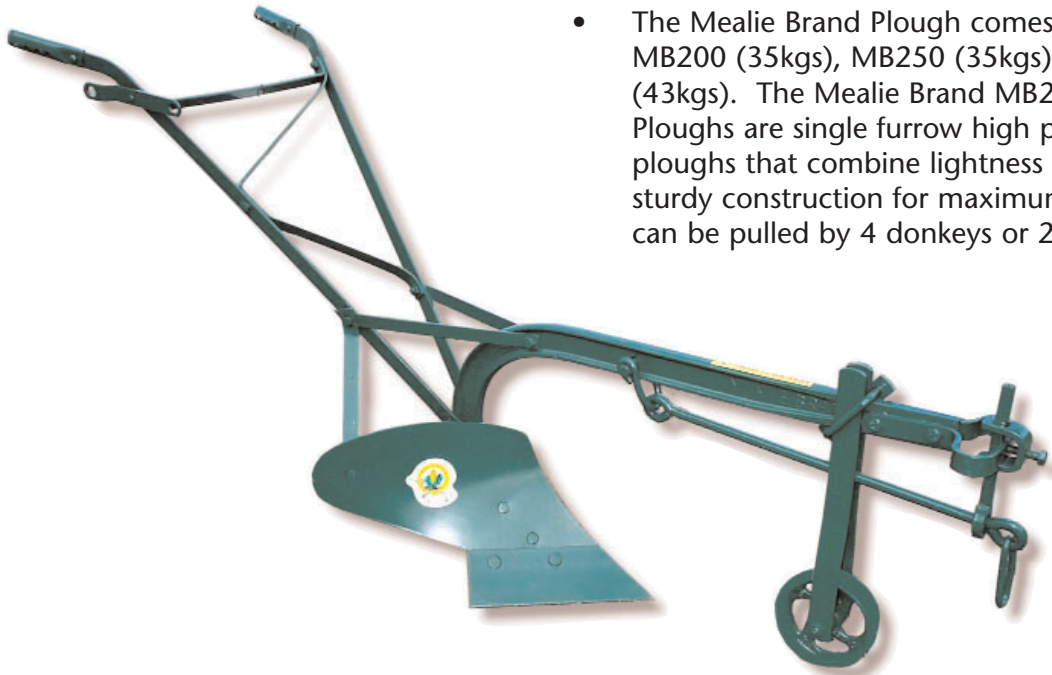
Mealie Brand Maun/Triangular Harrow	42
Mealie Brand Diamond Harrow	42
Mealie Brand Zig-Zag Harrow	42

Mealie Brand Hoes

Mealie Brand Spade-Shaped Tang Hoe	45
Mealie Brand Heart-Shaped Tang Hoe	46
Mealie Brand Raised Eye Ring Hoe	47
Mealie Brand Sunken Head (Ceylon Type) Hoe	48

MEALIE BRAND PLOUGHS

MB200 – 300 Ploughs



- The Mealie Brand Plough comes in three sizes, MB200 (35kgs), MB250 (35kgs) and MB300 (43kgs). The Mealie Brand MB200 & MB250 Ploughs are single furrow high performance ploughs that combine lightness in weight with sturdy construction for maximum strength and can be pulled by 4 donkeys or 2 oxen.

Mealie Brand Maun Plough



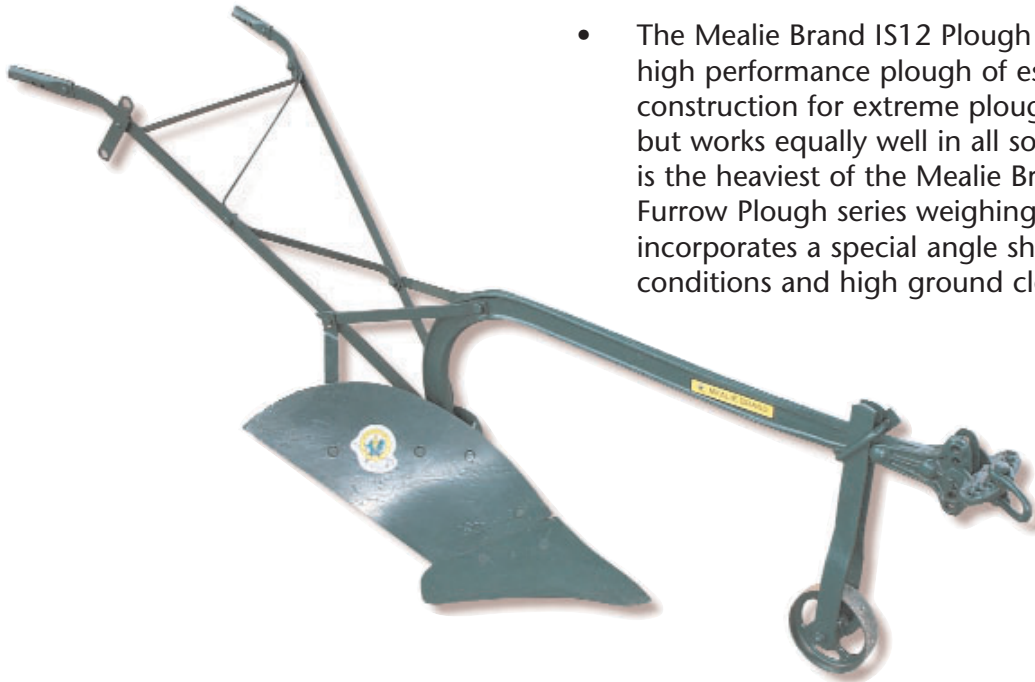
- The Mealie Brand Maun Plough is similar in construction to the traditional ox-drawn plough, but is lighter and designed for use with donkeys. The Maun Plough combines lightness in weight with sturdy construction for maximum strength and ease of use.

- The plough has been tried, tested and approved in design and performance in Zimbabwe by the Institute of Agricultural Engineering, Agritex and in the UK by the Silso Agricultural Research Institute.
- Most parts are interchangeable with the conventional Mealie Brand Single Furrow Plough.



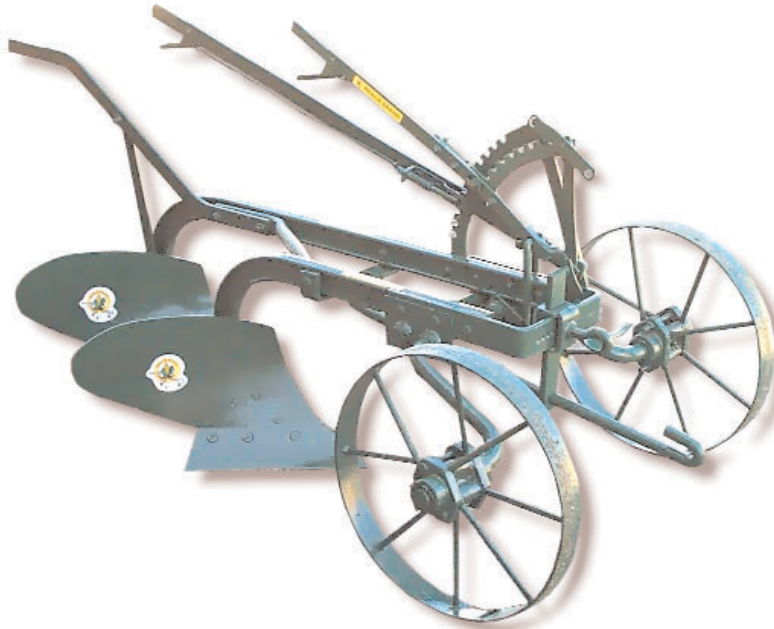


Mealie Brand IS12 Plough



- The Mealie Brand IS12 Plough is a single furrow high performance plough of especially heavy construction for extreme ploughing conditions, but works equally well in all soils. The plough is the heaviest of the Mealie Brand Single Furrow Plough series weighing 47kgs. It also incorporates a special angle share for heavy soil conditions and high ground clearance.

Mealie Brand P23 2-Furrow Plough



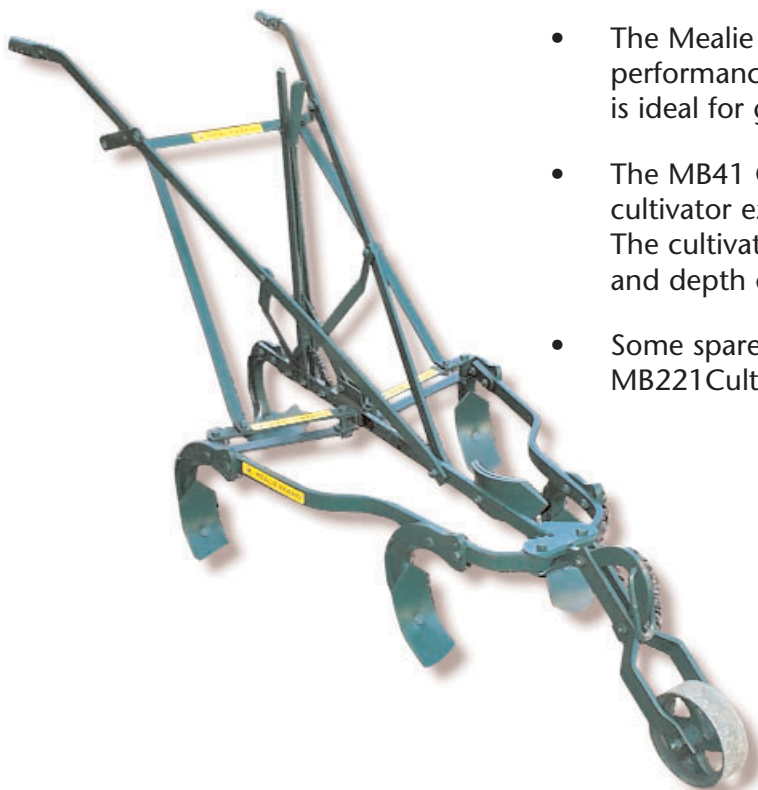
- The Mealie Brand P23 Plough is a high performance light double-furrow plough.
- The P23 weighs 126kgs complete, is designed for animal draught and performs exceptionally well under all soil conditions. Wide spaced wheels can be moved forward to prevent capsizing.

The Mealie Brand Ploughs are easily used by only one person, easily transported between home and fields, and setting adjustments are quickly and easily made. The ploughs are easy to maintain and wearing parts such, as the share wheel and landside are easy to replace. All the ploughs are great value for money and all spare parts are available from your nearest stockist.

Remember to buy only genuine Mealie Brand spares – *your guarantee of quality.*

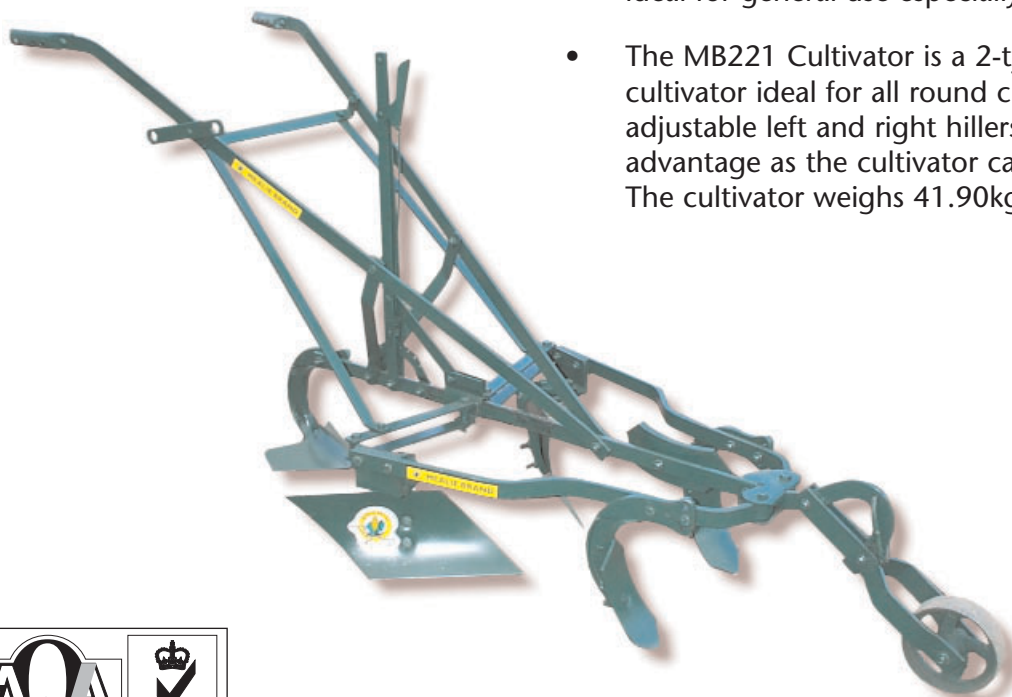
Mealie Brand Cultivators

Mealie Brand MB41 Cultivator



- The Mealie Brand MB41 Cultivator is a high performance cultivator of robust construction and is ideal for general use on medium to light soils.
- The MB41 Cultivator is a 4-tyne and sweep cultivator excellent for all round cultivation. The cultivator is easily adjusted for width of row and depth of cultivation and weighs only 37.40kgs.
- Some spares are interchangeable with the MB221 Cultivator model.

Mealie Brand MB221 Cultivator



- The Mealie Brand MB221 Cultivator is a high performance cultivator of robust construction and is ideal for general use especially on heavy soils.
- The MB221 Cultivator is a 2-tyne 2-hiller with sweep cultivator ideal for all round cultivation. The fully adjustable left and right hillers give an added advantage as the cultivator can be used for ridging. The cultivator weighs 41.90kgs.





Mealie Brand Maun Cultivator



- The Mealie Brand Maun Cultivator is a high performance cultivator for general use on medium to light soils. The light, but robust construction makes the cultivator easy to use, even with donkeys.
- The Mealie Brand Maun Cultivator weighs only 25.90kgs, has forged steel duckfoot sweeps and universal share arms to give good soil penetration.

Mealie Brand MC5 Cultivator



- The Mealie Brand MC5 Cultivator is an adjustable high performance cultivator for light to medium soils. The cultivator has a unique adjustment system in a horizontal plane. This adjustment system ensures rigid and positive width to a sturdy and well-engineered implement.
- The cultivator weighs 45.60kgs.

Mealie Brand CS2 and CS3 Cultivators



- The Mealie Brand CS2 and CS3 Cultivators are 2-tyned and 3-tyned (respectively) adjustable high performance cultivators for light to medium soils. The CS2 Cultivator weighs only 26.20kgs and the CS3 weighs 34.50kgs.

The Mealie Brand CS2 and CS3 Cultivators have large tyne shovels for maximum weed control. Reversible tynes (optional) can also be fitted.

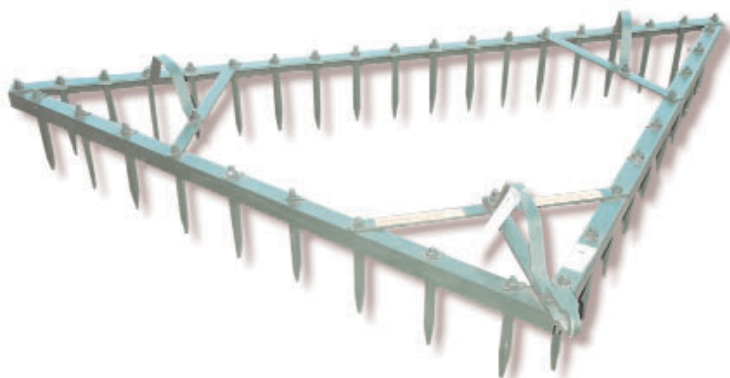
The cultivators can easily be used by only one person and can easily be transported between home and fields.

Setting adjustments can be quickly and easily made.

The cultivators are easy to maintain and wearing parts are easy to replace.

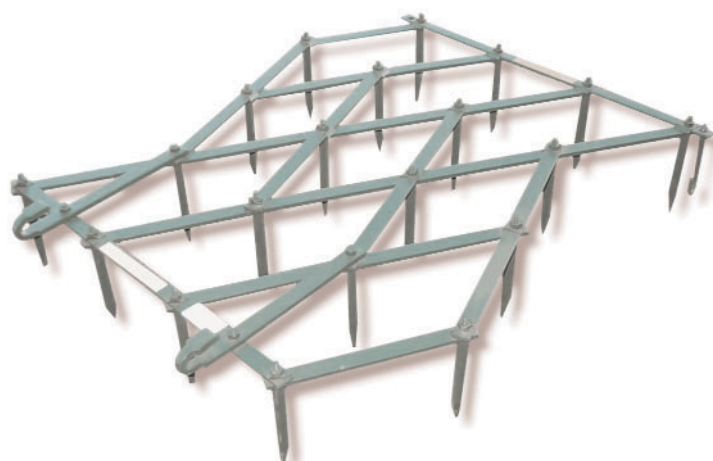
Mealie Brand Harrows

Mealie Brand Maun/Triangular Harrow



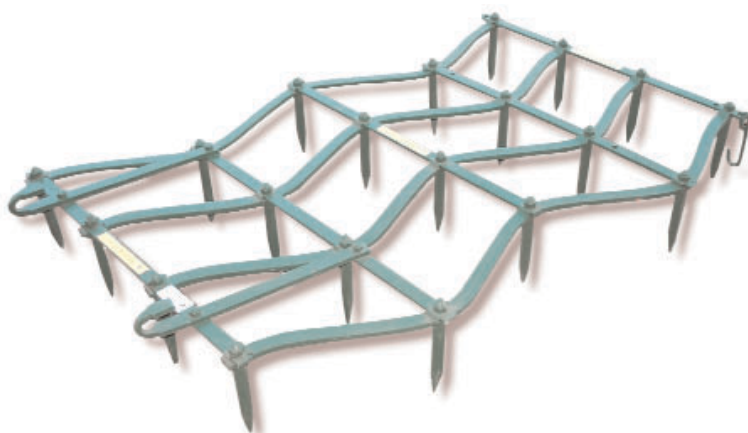
- The Mealie Brand Triangular Harrow is designed for use in lighter soils.
- The Maun Triangular Harrow can be drawn by one animal and weighs 21.80kgs complete.
- Maximum weight of the heavier Triangular Harrow is 33.30kgs.

Mealie Brand Diamond Harrow



- The Mealie Brand Diamond Harrow is suitable for medium type soil.
- It uses the same tool as the Triangular Harrow i.e. square 16 x 16mm (Part No. 602) and weighs 25.50kgs.

Mealie Brand Zig-Zag Harrow



- The Mealie Brand Zig-Zag Harrow is intended for heavier type soil and fitted with 20 x 20mm square or flat teeth (Part Nos. 637 and 637A).
- It has a maximum weight of 41kgs dependent on the teeth utilised.



Mealie Brand Products



Mealie Brand High Wing Ridger

- The Mealie Brand High Wing Ridger is designed to efficiently ridge and cultivate maize, potatoes, tobacco, ground nuts and other row crops. This is a high performance implement that combines lightness in weight with sturdy construction for maximum strength.
- The size of the ridge is determined by adjusting the width of the wings. The Ridger performs exceptionally well under all soil conditions.
- The High Wing Ridger weighs only 44kgs. The Ridger is easily used by only one person, easily transported between home and fields, easy to maintain and wearing parts are easy to replace.



Mealie Brand Groundnut Sheller

- The Mealie Brand Groundnut Sheller can be fitted with different sizes of screens as per customer's request.
- The Groundnut Sheller weighs 37.10kgs complete.



Mealie Brand Planter

Mealie Brand Planter (Pitman Drive with Fertiliser Attachment)



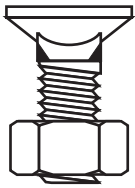
- The Mealie Brand Planter (Pitman Drive) is a single row planter operated on the very positive and secure Pitman Drive System. The planter is supplied with a seed hopper and a fertiliser attachment.
- Two maize seed plates and a sorghum plate are supplied as standard, whilst plates for other crops can be made available on application.
- The planter combines lightness in weight with sturdy construction for reliable, trouble-free planting, and performs exceptionally well under all soil conditions.
- Total weight of the Mealie Brand Planter with the fertiliser attachment is 56.50kgs. Supplied without the fertiliser attachment, it weighs 51.20kgs.
- An information leaflet with usage instructions is supplied with the machine.



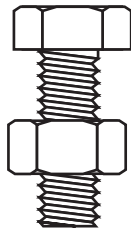
MEALIE BRAND NUTS AND BOLTS



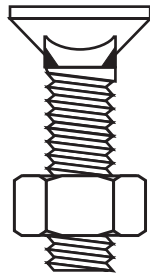
A
M10 x 30 CSK Sq



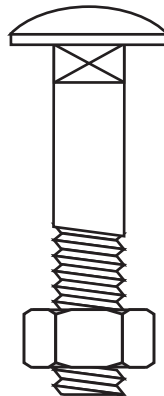
B
M10 x 30 HEX



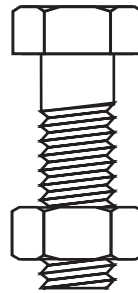
C1
M12 x 45 CSK Sq



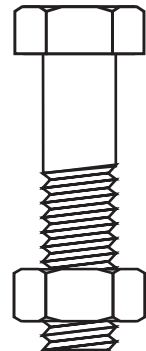
C2
M12 x 60 CUP Sq



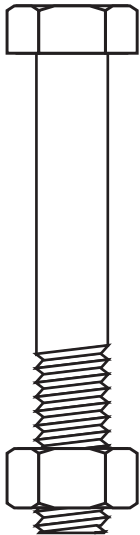
C3
M12 x 40 HEX



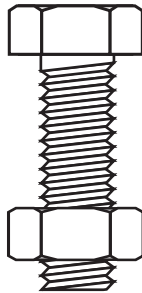
C4
M12 x 50 HEX



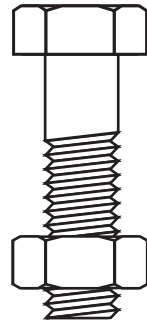
C5
M12 x 80 HEX



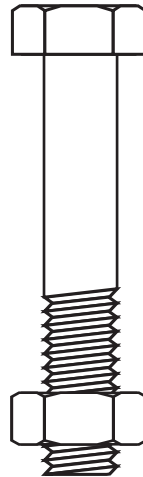
C6
M12 x 40 HEX



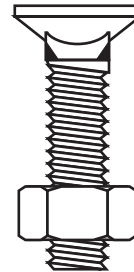
C7
M12 x 45 HEX



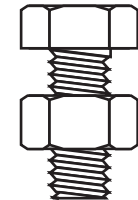
C8
M12 x 70 HEX



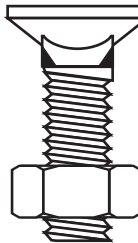
C9
M10 x 45 CSK Sq



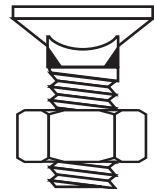
C10
M10 x 25 HEX



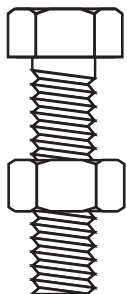
L
M12 x 40 CSK Sq



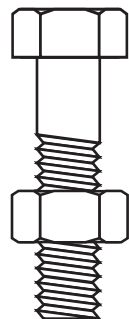
S
M12 x 30 CSK Sq



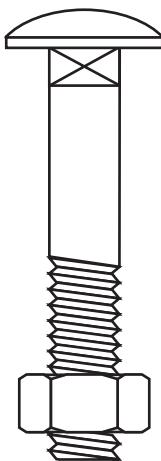
C11
M10 x 40 HEX



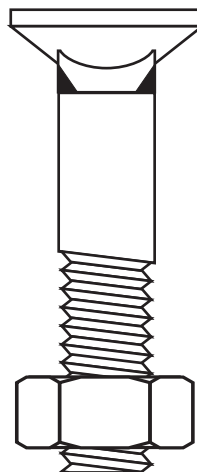
C12
M10 x 45 HEX



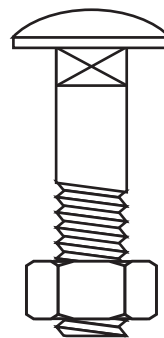
C13
M12 x 70 CUP Sq



C15
M16 x 80 CSK Sq



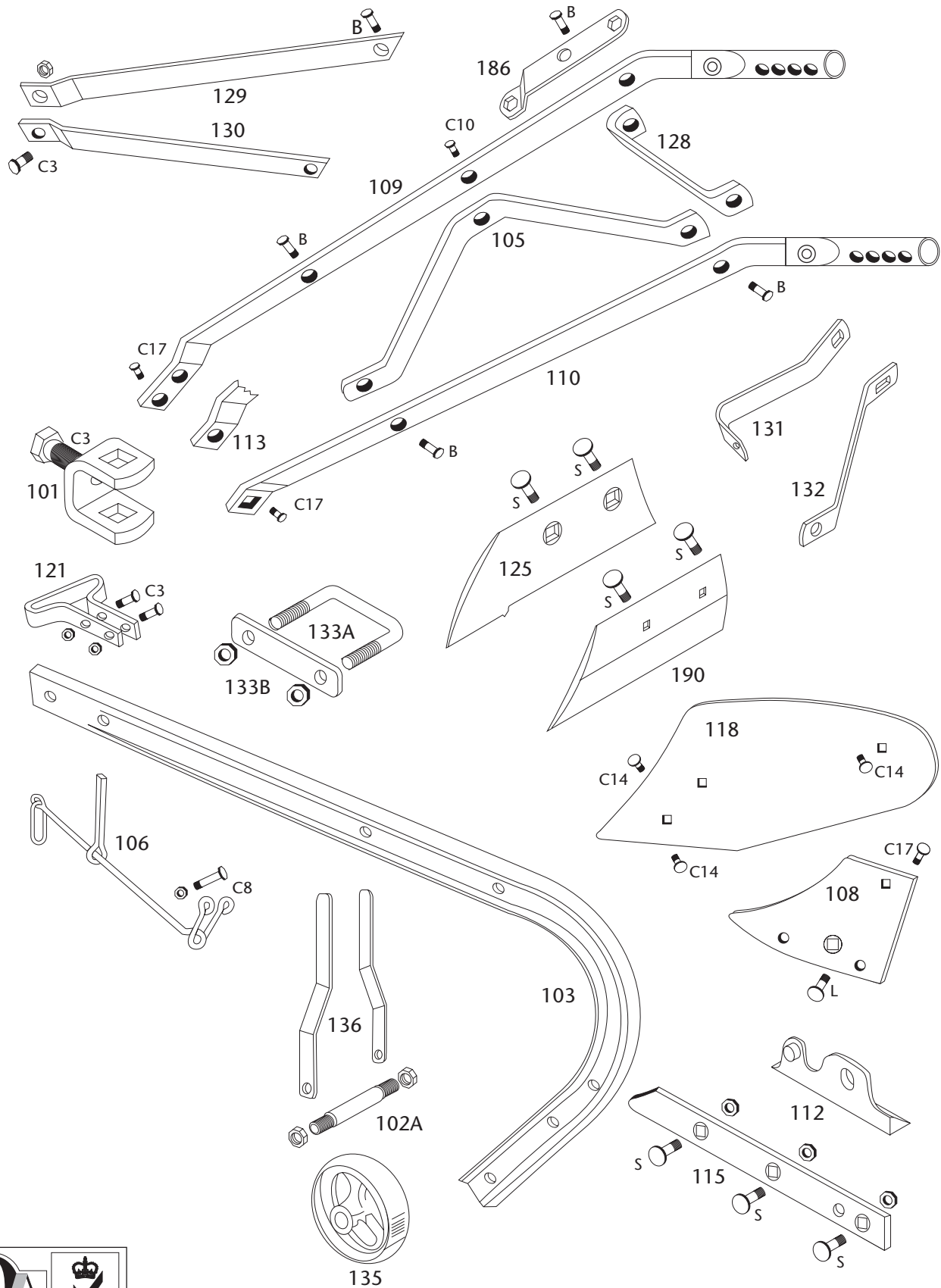
C17
M12 x 50 CUP Sq



C14
M10 x 25 CSK Sq



MEALIE BRAND MB200 PLOUGH PARTS



* See parts list for correct sizes





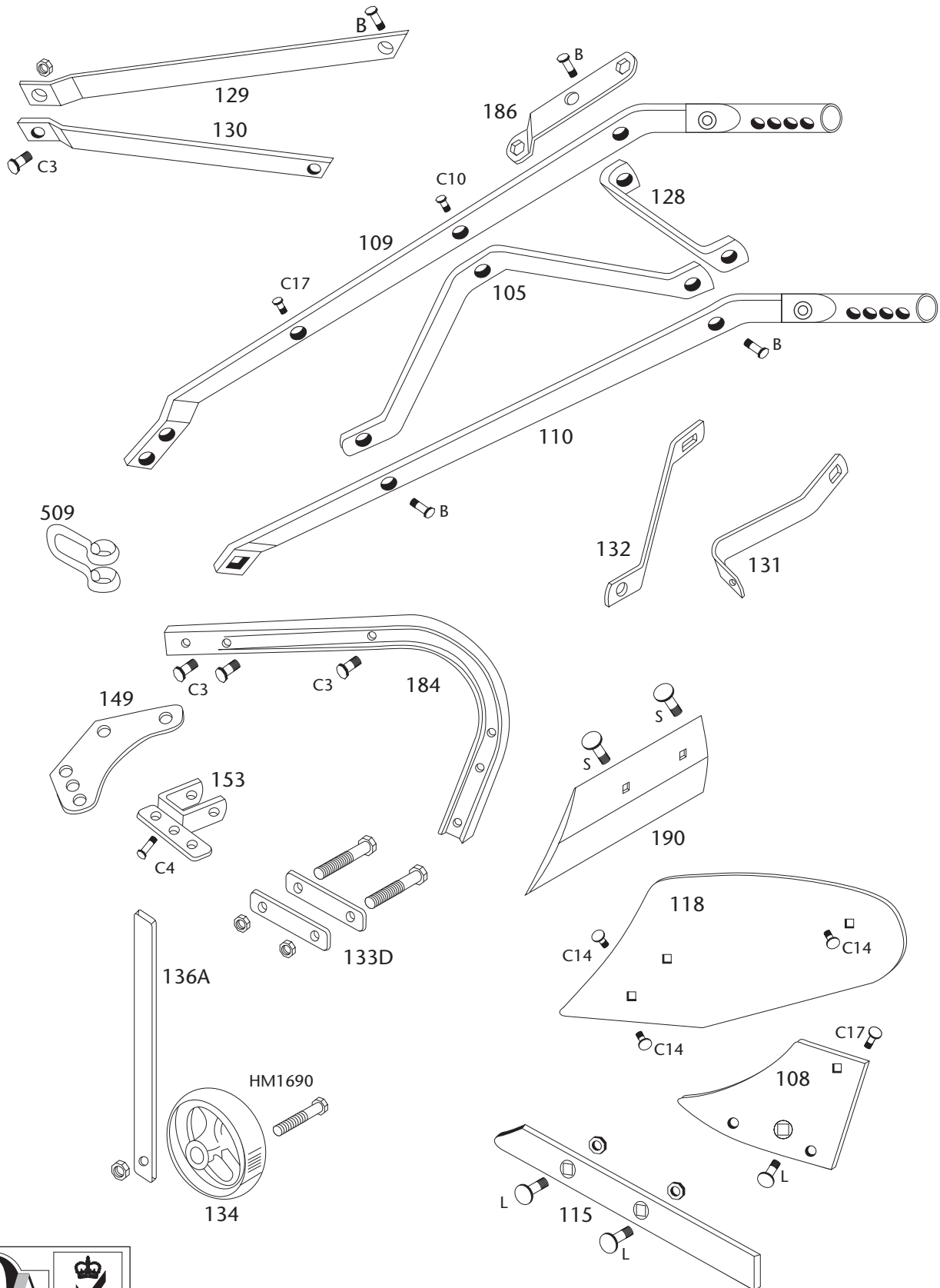
MEALIE BRAND MB200 PLOUGH



MB200 PLOUGH PARTS LIST

PART No	DESCRIPTION	Mass Kgs
1	MB200 SINGLE FURROW PLOUGH with 200mm FLATSHARE	35.00
1A	MB200 SINGLE FURROW PLOUGH with 200mm F/SHARE H/TYPE L/SIDE FITTED WITH HEEL PIECE	35.20
2	MB200 SINGLE FURROW PLOUGH with 200mm UPSET SHARE	35.00
3	MB200 SINGLE FURROW PLOUGH with 250mm FLAT SHARE	35.00
3A	MB200 SINGLE FURROW PLOUGH with 250mm F/SHARE H/TYPE L/SIDE FITTED WITH HEEL PIECE	35.40
5	MB300 SINGLE FURROW PLOUGH with 300mm FLAT SHARE	43.00
010	RIPPER TYNE ATTACHMENT	3.16
011	RIPPER TYNE BODY	1.87
012	RIPPER TYNE WITH 2 BOLTS	1.01
018	GROUND NUT LIFTER ATTACHMENT ASSEMBLY	17.00
101	ADJUSTING BAR HOLDER AND BOLT	0.44
102A	AXLE c/w 2 NUTS	0.17
103	BEAM MB200/250	9.20
104	BEAM MB300	11.12
105	CROSS BRACE	0.85
106	DRAWBAR ASSEMBLY MB200/250	2.30
107	DRAWBAR ASSEMBLY MB300	2.90
108	FROG	2.85
109	HANDLE BAR WITH GRIP RH (double hole)	2.26
110	HANDLE BAR WITH GRIP LH	2.20
111	HANDLE ASSEMBLY COMPLETE with Part No. 109	6.86
112	HEEL PIECE	0.34
113	HANDLE BAR WITH GRIP R/H (single hole)	2.20
114	HANDLE ASSEMBLY COMPLETE (single hole) with Part No. 113	6.80
115	LANDSIDE HEEL TYPE	1.63
116	LANDSIDE PLAIN	1.65
117	LANDSIDE FITTED WITH HEEL PIECE	2.00
118	MOULDBOARD MB200/250	2.98
119	MOULDBOARD MB300	3.90
120	PLOUGH TIE MB300	0.14
121	REGULATOR	1.08
123	FLAT SHARE MB250	1.57
124	FLAT SHARE MB300	1.73
124A	UPSET SHARE MB300	1.87
125	UPSET SHARE MB200	1.59
126	UPSET SHARE MB250	2.10
128	SPREADER BAR	0.50
129	HANDLE STAY RH	0.37
130	HANDLE STAY LH	0.37
131	STAY BEAM TO MOULDBOARD	0.35
132	STAY HANDLE TO MOULDBOARD	0.36
133	U CLAMP ASSEMBLY	0.45
134	WHEEL (180mm) CAST IRON 4 SPOKE	1.78
135	WHEEL (150mm) CAST IRON 4 SPOKE	1.30
136	WHEEL ARM (PAIR) MB200/250	2.25
137	WHEEL ARM (PAIR) MB300	2.36
138	WHEEL (150mm) & ARM ASSEMBLY MB200/250	3.72
139	WHEEL (180mm) & ARM ASSEMBLY MB200/250	4.09
140	WHEEL (150mm) & ARM ASSEMBLY MB300	4.12
186	SPANNER MB	0.24
190	FLAT SHARE MB200 (SYM)	1.60

MEALIE BRAND MAUN PLOUGH PARTS



* See parts list for correct sizes





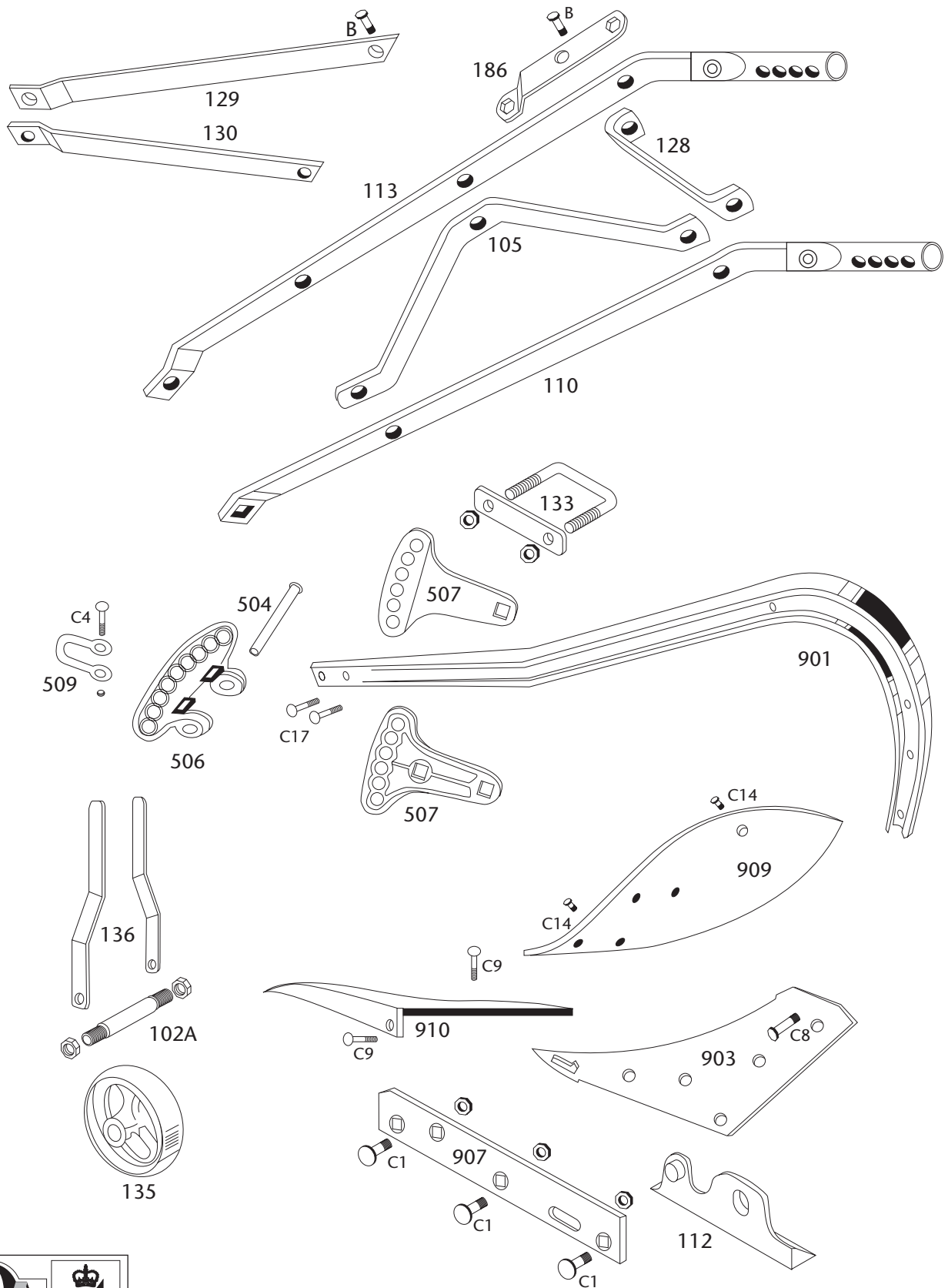
MEALIE BRAND MAUN PLOUGH



MAUN PLOUGH PARTS LIST

PART No	DESCRIPTION	Mass Kgs
MP1	PLOUGH with DOUBLE HOLE RH HANDLE BAR	29.00
MP1A	PLOUGH with SINGLE HOLE RH HANDLE BAR	29.00
105	CROSS BRACE	0.85
108	FROG	2.85
109	HANDLE BAR WITH GRIP RH (DOUBLE HOLE)	2.26
110	HANDLE BAR WITH GRIP LH	2.20
111	HANDLE BAR ASSEMBLY COMPLETE WITH PART No. 109	6.86
113	HANDLE BAR WITH GRIP RH (SINGLE HOLE)	2.20
114	HANDLE BAR ASSEMBLY COMPLETE WITH PART No. 113	6.80
116	LANDSIDE PLAIN	1.65
118	MOULD BOARD MB200/250	2.98
128	SPREADER BAR	0.50
129	HANDLE STAY RH	0.37
130	HANDLE STAY LH	0.37
131	STAY BEAM TO MOULDBOARD	0.35
132	STAY HANDLE TO MOULDBOARD	0.36
133D	CLAMP PLATE	0.30
134	180mm (7") CAST IRON WHEEL	1.30
136A	SINGLE WHEEL ARM	1.16
149	DEPTH CLEVIS	1.10
153	CROSS CLEVIS & U-BRACKET (3 HOLE)	1.01
186	MB SPANNER	0.24
189	BEAM SHORT	7.60
190	SHARE	1.60
509	DRAWLINK SHACKLE	0.29
HM1690	AXLE WITH NUT (MAUN TYPE)	0.20

MEALIE BRAND IS12 PLOUGH PARTS



* See parts list for correct sizes





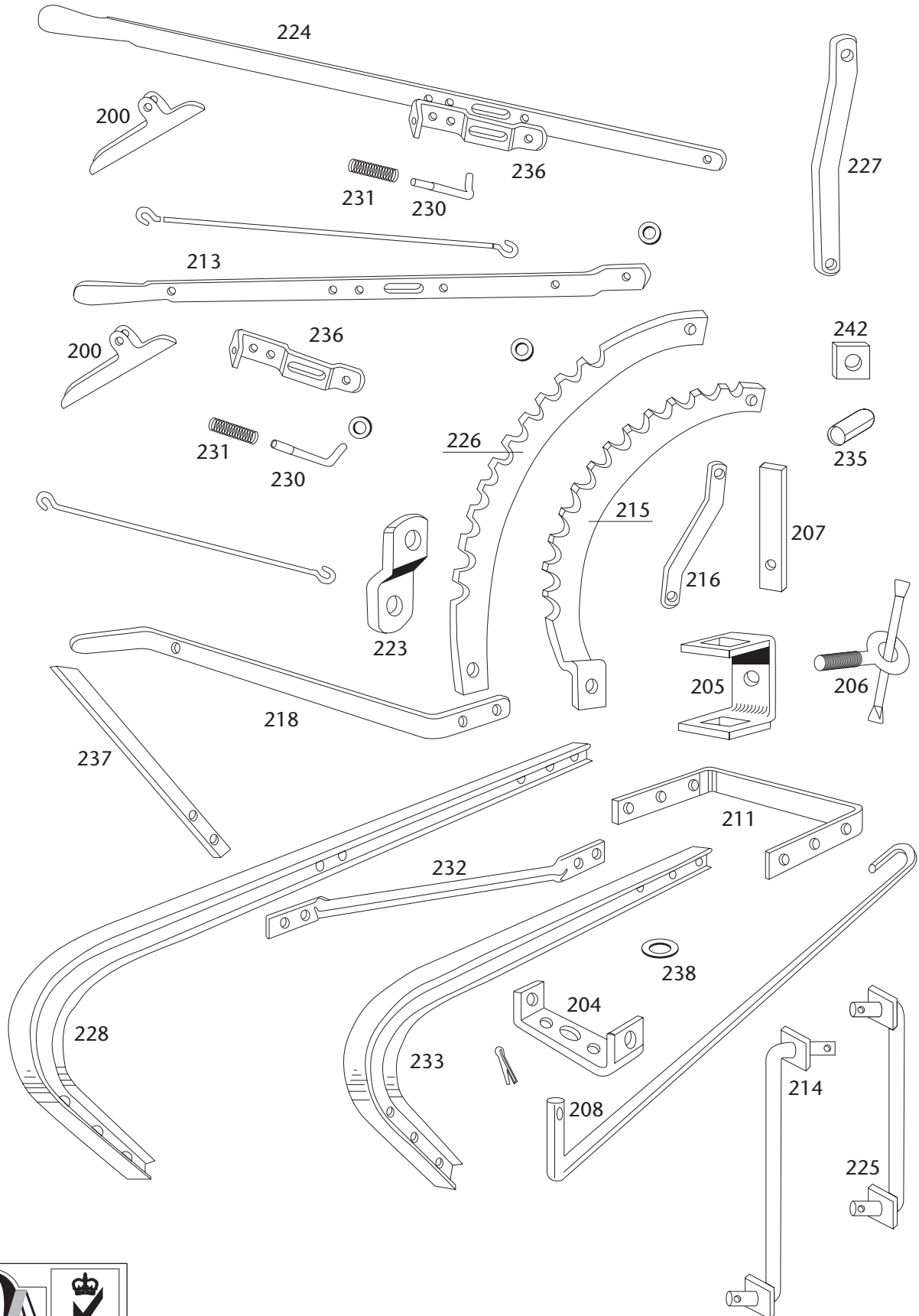
MEALIE BRAND IS12 PLOUGH



IS12 PLOUGH PARTS LIST

PART No.	DESCRIPTION	Mass Kgs
102A	AXLE c/w 2 NUTS	0.17
105	CROSSBRACE	0.85
110	HANDLEBAR WITH GRIP L/H	2.20
112	HEELPIECE	0.34
113	HANDLEBAR WITH GRIP R/H (SINGLE HOLE)	2.20
114	HANDLE BAR ASSEMBLY COMPLETE with PART No 113	6.80
128	SPREADER BAR	0.50
129	HANDLE STAY R/H	0.37
130	HANDLE STAY L/H	0.37
133	U CLAMP ASSEMBLY	0.45
135	WHEEL (150mm) CAST IRON 4 SPOKE	1.30
136	WHEEL ARM (PAIR) MB200/250	2.25
137	WHEEL ARM (PAIR) MB300	2.36
138	WHEEL (150mm) & ARM ASSEMBLY MB200/250	3.72
186	SPANNER MB	0.24
504	CLEVIS PIN	0.10
506	CROSS CLEVIS	0.76
507	DEPTH CLEVIS (EACH)	0.76
509	DRAW LINK	0.29
901	IS12 BEAM	11.20
903	IS12 FROG	6.06
907	IS12 LANDSIDE HEEL TYPE (SLOTTED)	1.44
908	IS12 LANDSIDE AND HEEL PIECE	2.05
909	IS12 MOULD BOARD	4.21
910	IS12 SHARE	2.59
917	STAY HANDLE TO MOULBOARD	0.35

MEALIE BRAND P23 2-FURROW PLOUGH PARTS



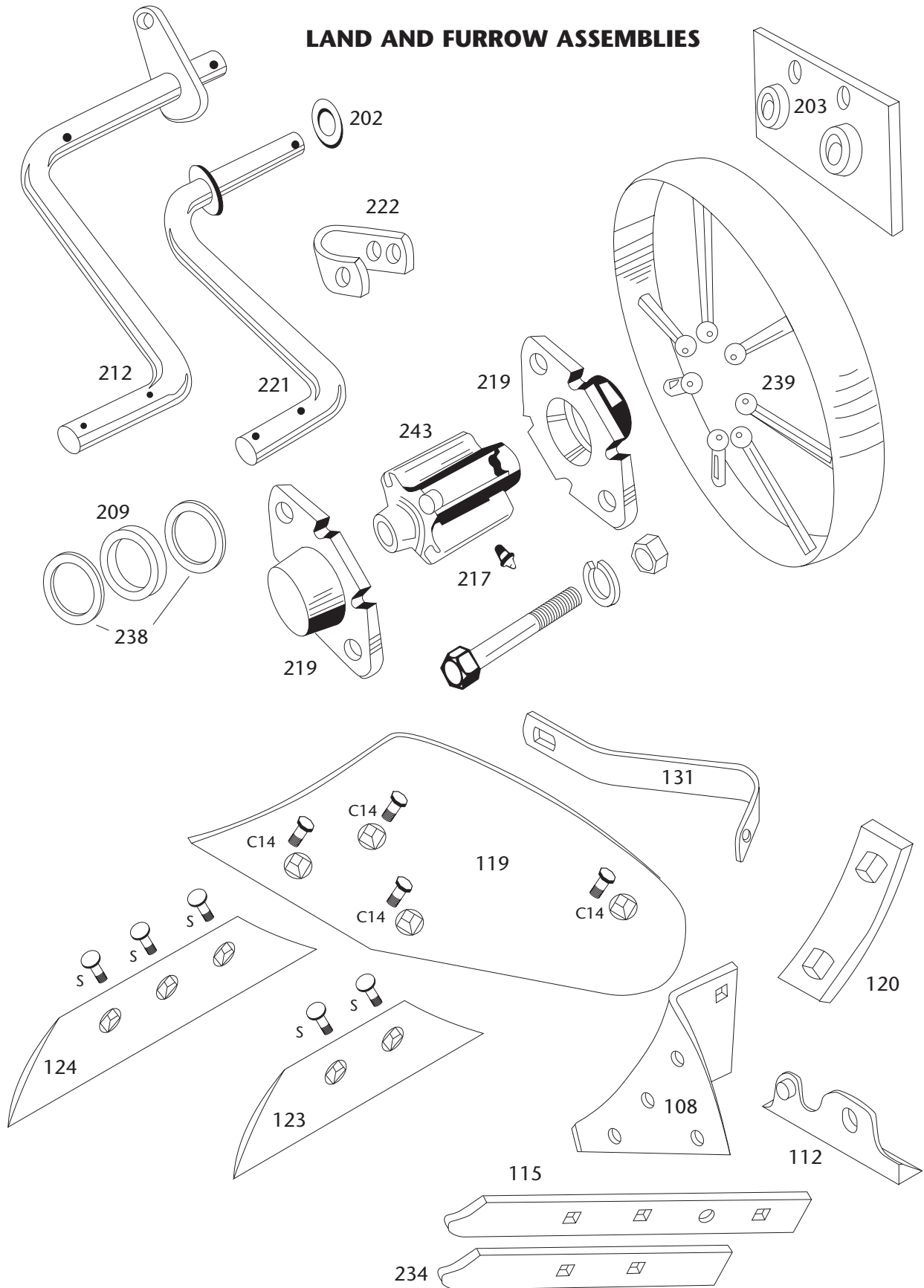
* See parts list for correct sizes



P23 2-FURROW PLOUGH PARTS



LAND AND FURROW ASSEMBLIES



* See parts list for correct sizes



MEALIE BRAND P23 2-FURROW PLOUGH

P23 PLOUGH PARTS LIST

PART No.	DESCRIPTION	Mass Kgs
108	FROG	2.85
112	HEEL PIECE	0.34
115	LANDSIDE HEEL TYPE	1.63
117	LANDSIDE FITTED WITH HEEL PIECE	2.00
118	MOULD BOARD MB200/250	2.98
119	MOULD BOARD MB300	3.90
120	PLOUGH TIE MB300	0.14
123	FLAT SHARE MB250	1.57
124	FLAT SHARE MB300	1.73
131	STAYBEAM TO MOULDBOARD MB200	0.35
186	SPANNER	0.24
200	HAND LATCH / P23 & CULTIVATOR	0.08
202	AXLE WASHER	0.02
203	BEARING PLATE	0.58
204	CENTRE BRACE	2.18
205	CLEVIS HOLDER	0.86
206	CLEVIS SCREW AND LEVER COMPLETE	0.64
207	DEPTH CLEVIS	1.84
208	DRAWBAR	4.20
209	FELT WASHER	0.02
211	FRONT BRACE	5.30
212	FURROW AXLE - COMPLETE	8.03
213	FURROW LEVER - COMPLETE	2.39
214	FURROW LEVER CONNECTING LINK	0.54
215	FURROW LEVER RACK	1.01
216	FURROW RACK BRACE	0.41
217	GREASE NIPPLE	0.01
218	GUIDE LEVER	2.82
219	HUBCAP (UNIVERSAL)	1.30



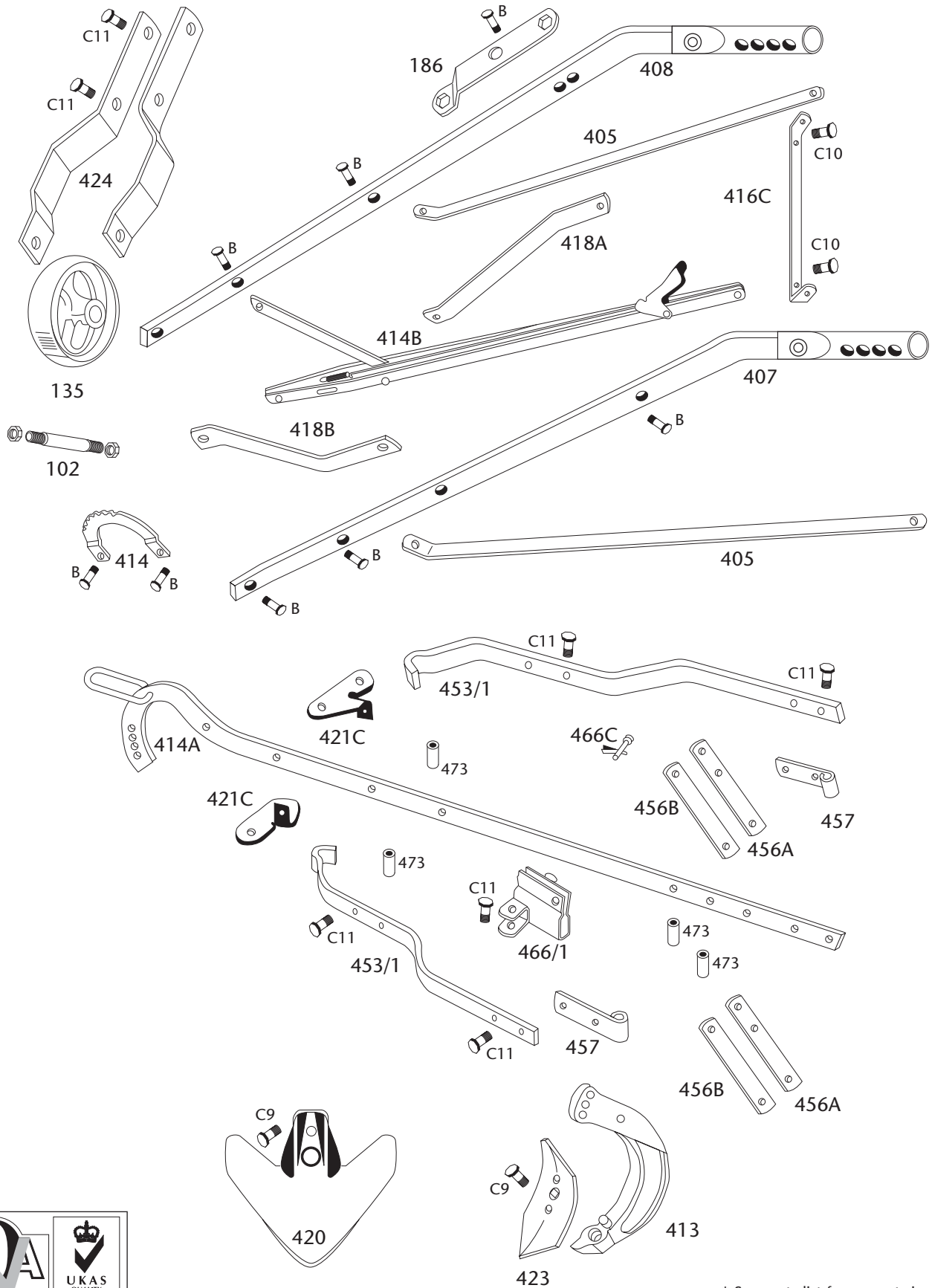
MEALIE BRAND P23 2-FURROW PLOUGH



P23 PLOUGH PARTS LIST (Cont)

PART No.	DESCRIPTION	Mass Kgs
221	LAND AXLE	7.55
222	LAND AXLE CLAMP	0.64
223	LAND LEVER BRACKET	0.16
224	LAND LEVER - COMPLETE	4.20
225	LAND LEVER CONNECTING LINK	0.61
226	LAND LEVER RACK	1.27
227	LAND RACK BRACE	1.16
228	LONG BEAM	12.90
230	PLUNGER	0.19
231	PLUNGER SPRING	0.08
232	REAR BRACE	5.51
233	SHORT BEAM	9.00
234	SHORT LANDSIDE	1.32
235	SPACER PIPE	0.02
236	SPRINGBOX	0.34
237	STAYBEAM TO GUIDE LEVER	0.86
238	STEEL WASHER FOR DRAWBAR	0.01
239	WHEEL ASSEMBLY - COMPLETE WITH END CAPS	12.20
240	WHEEL ASSEMBLY WITHOUT END CAPS	9.40
242	PACKING PIECE	0.10
243	WHEEL HUB ONLY WITH BRONZE BUSH & NIPPLE	2.60

MEALIE BRAND MB41 CULTIVATOR PARTS



* See parts list for correct sizes





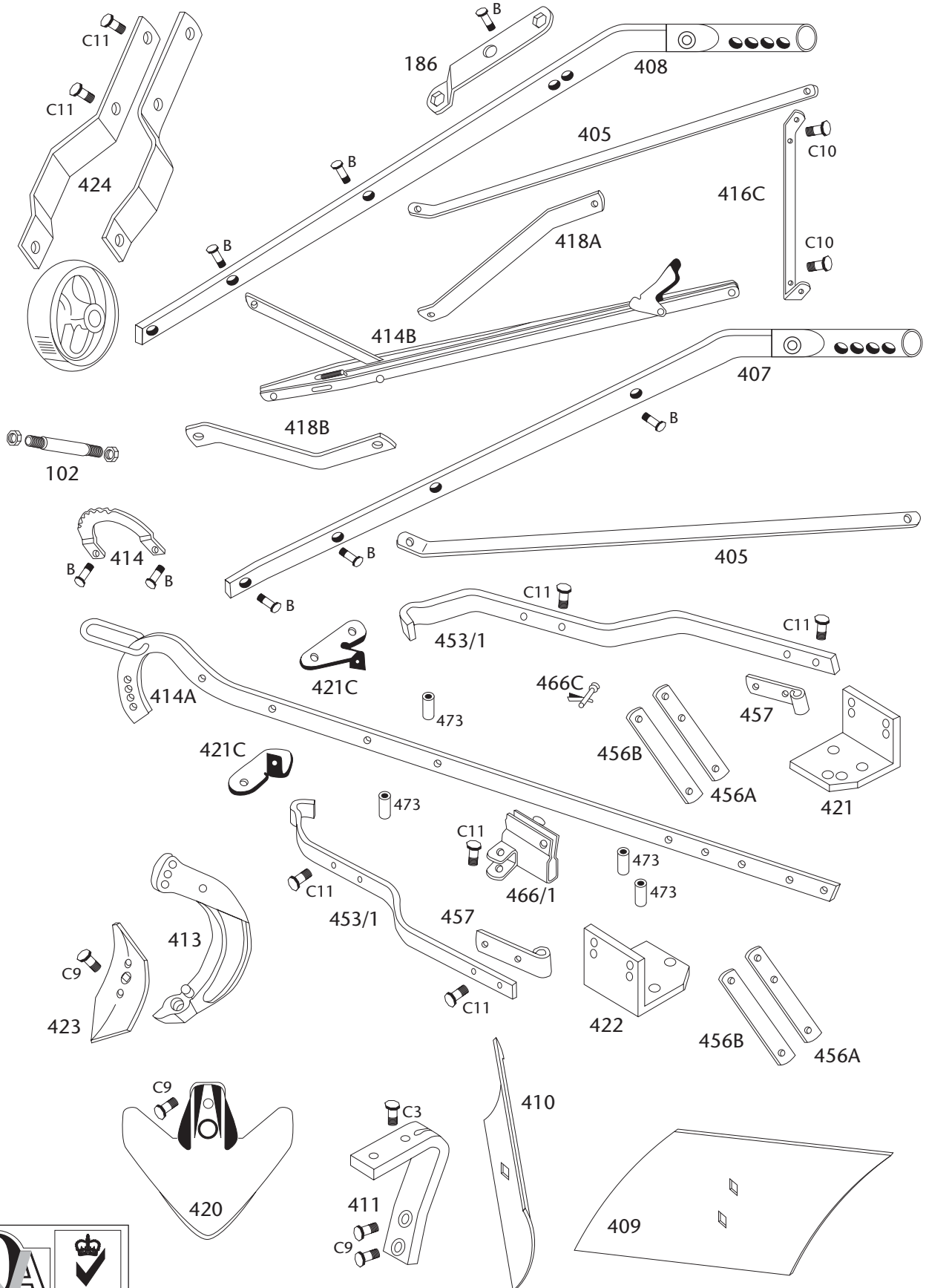
MEALIE BRAND MB41 CULTIVATOR



MB41 CULTIVATOR PARTS LIST

PART No.	DESCRIPTION	Mass Kgs
102A	AXLE c/w 2 NUTS	0.17
135	WHEEL (150mm) CAST IRON 4 SPOKE	1.30
186	SPANNER MB	0.24
405	EXPANDING LINK STAY	1.02
407	HANDLE BAR WITH GRIP CULTIVATOR RH	2.70
408	HANDLE BAR WITH GRIP CULTIVATOR LH	2.70
413	UNIVERSAL SHARE ARM	1.35
414	RACK FOR ADJUSTING LEVER	0.23
414A	BEAM AND DRAWLINK ASSEMBLY	3.76
414B	ADJUSTING LEVER ASSEMBLY	1.80
416C	SPREADER BAR	0.50
418A	STAY HANDLE TO BEAM CULTIVATOR RH	0.41
418B	STAY HANDLE TO BEAM CULTIVATOR LH	0.41
420	SWEEP 10" (250mm)	0.88
421C	SWIVEL PLATE	0.22
423	TYNE 3" (75mm)	0.67
424	WHEEL ARM FOR CULTIVATOR (PAIRS)	1.74
453/1	EXPANDING BEAM MB221/41	2.95
456A	LINK ARM TOP	0.32
456B	LINK ARM BOTTOM	0.33
457	EYE PLATE	0.18
466/1	SLIDING BRACKET ASSEMBLY MB221/41	0.58
466C	SLIDE BRACKET PIN	0.02
473	BUSH	0.02

MEALIE BRAND MB221 CULTIVATOR PARTS



* See parts list for correct sizes





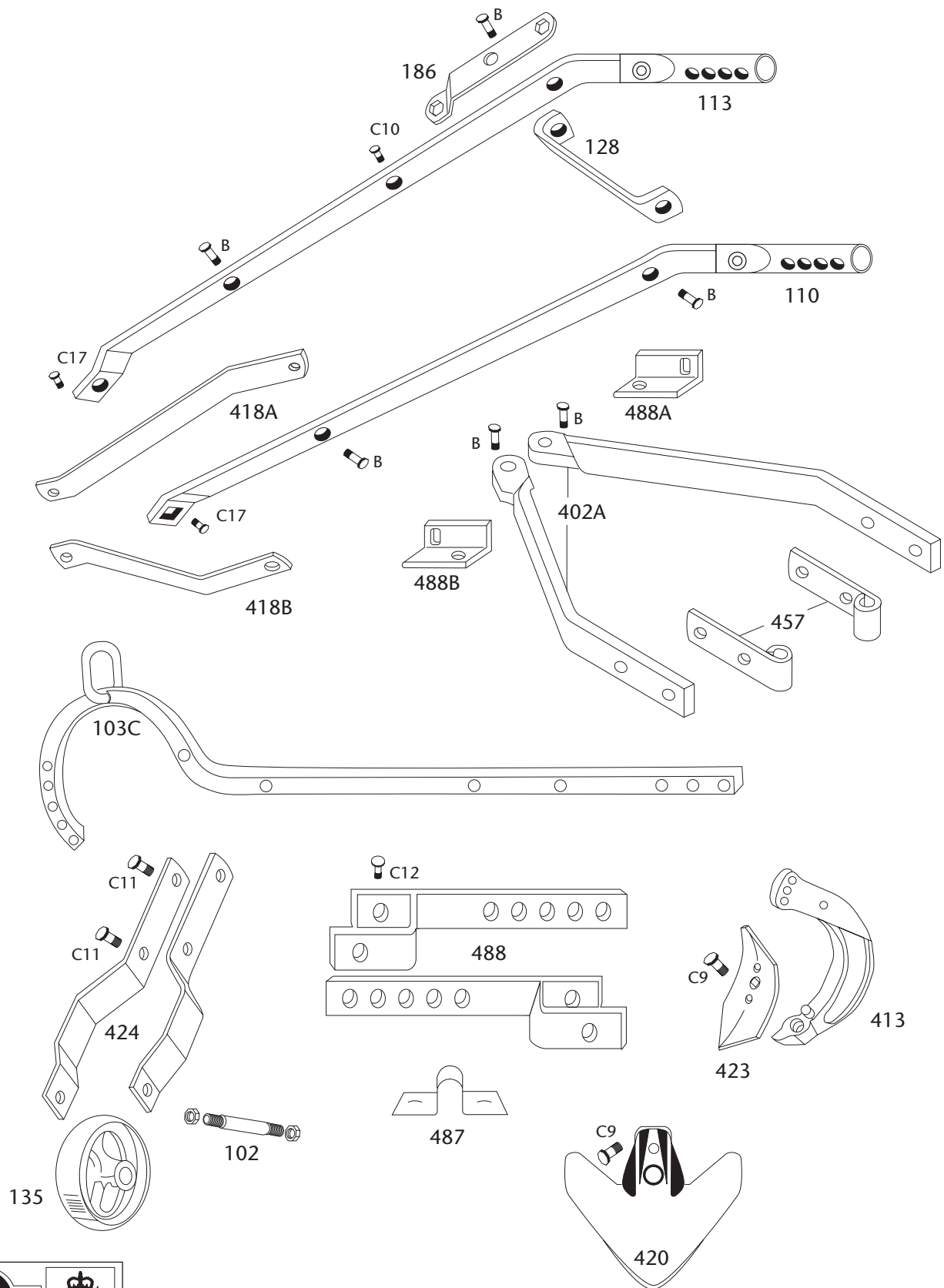
MEALIE BRAND MB221 CULTIVATOR



MB221 CULTIVATOR PARTS LIST

PART No.	DESCRIPTION	Mass Kgs
102A	AXLE c/w 2 NUTS	0.17
135	WHEEL (150mm) CAST IRON 4 SPOKE	1.30
186	SPANNER MB	0.24
405	EXPANDING LINK STAY	1.02
407	HANDLE BAR WITH GRIP CULTIVATOR RH	2.70
408	HANDLE BAR WITH GRIP CULTIVATOR LH	2.70
409	HILLER RH	1.56
410	HILLER LH	1.56
411	HILLER ARM	1.30
413	UNIVERSAL SHARE ARM	1.35
414	RACK FOR ADJUSTING LEVER	0.23
414A	BEAM AND DRAWLINK ASSEMBLY	3.76
414B	ADJUSTING LEVER ASSEMBLY	1.80
416C	SPREADER BAR	0.50
418A	STAY HANDLE TO BEAM CULTIVATOR RH	0.41
418B	STAY HANDLE TO BEAM CULTIVATOR LH	0.41
420	SWEEP 10" (250mm)	0.88
421	SWIVEL BRACKET RH	1.07
421C	SWIVEL PLATE	0.22
422	SWIVEL BRACKET LH	1.07
423	TYNE 3" (75mm)	0.67
424	WHEEL ARM FOR CULTIVATOR (PAIRS)	1.74
453/1	EXPANDING BEAM MB221/41	2.95
456A	LINK ARM TOP	0.32
456B	LINK ARM BOTTOM	0.33
457	EYE PLATE	0.18
466C	SLIDE BRACKET PIN	0.02
466/1	SLIDING BRACKET ASSEMBLY MB221/41	0.58
473	BUSH	0.02

MEALIE BRAND MAUN CULTIVATOR PARTS



* See parts list for correct sizes



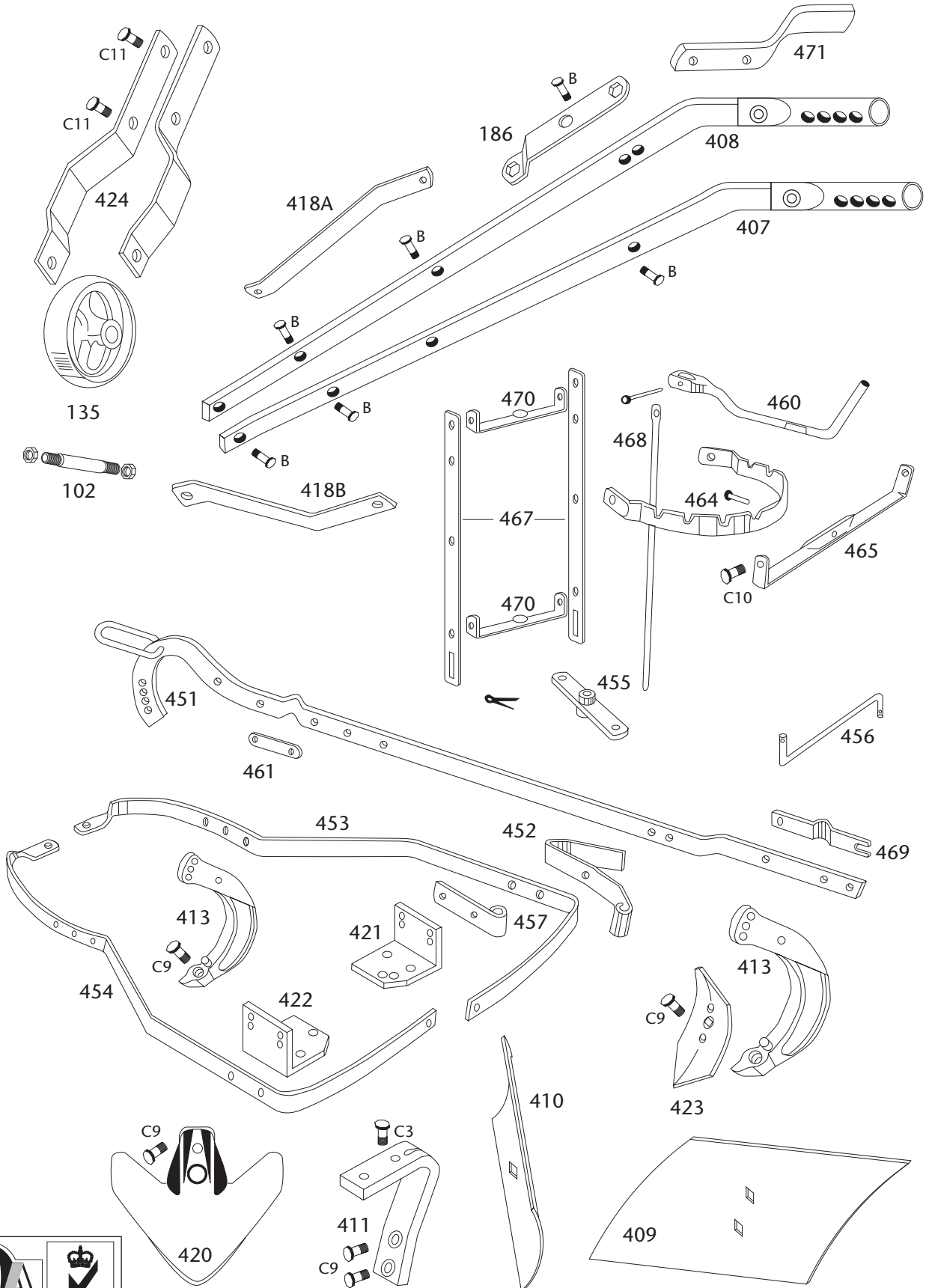
MEALIE BRAND MAUN CULTIVATOR



MAUN CULTIVATOR PARTS LIST

PART No.	DESCRIPTION	Mass Kgs
102A	AXLE c/w 2 NUTS	0.17
103C	BEAM AND DRAWLINK ASSEMBLY (MAUN)	3.05
110	HANDLE BAR WITH GRIP LH	2.20
113	HANDLE BAR WITH GRIP RH (SINGLE HOLE)	2.26
128	SPREADER BAR	0.50
135	WHEEL (150mm) CAST IRON 4 SPOKE	1.30
186	SPANNER MB	0.24
402A	CULTIVATOR ARM (MAUN)	1.07
413	UNIVERSAL SHARE ARM	1.35
418A	STAY HANDLE TO BEAM CULTIVATOR RH	0.41
418B	STAY HANDLE TO BEAM CULTIVATOR LH	0.41
420	SWEEP 10" (250mm)	0.88
423	TYNE 3" (75mm)	0.67
424	WHEEL ARM FOR CULTIVATOR (PAIRS)	1.74
457	EYE PLATE	0.18
487	U-BRACKET	0.14
488	ADJUSTING BAR ASSEMBLY	0.49
488A	ARM TO BEAM BRACKET R/H	0.25
488B	ARM TO BEAM BRACKET L/H	0.25

MEALIE BRAND MC5 CULTIVATOR PARTS



* See parts list for correct sizes





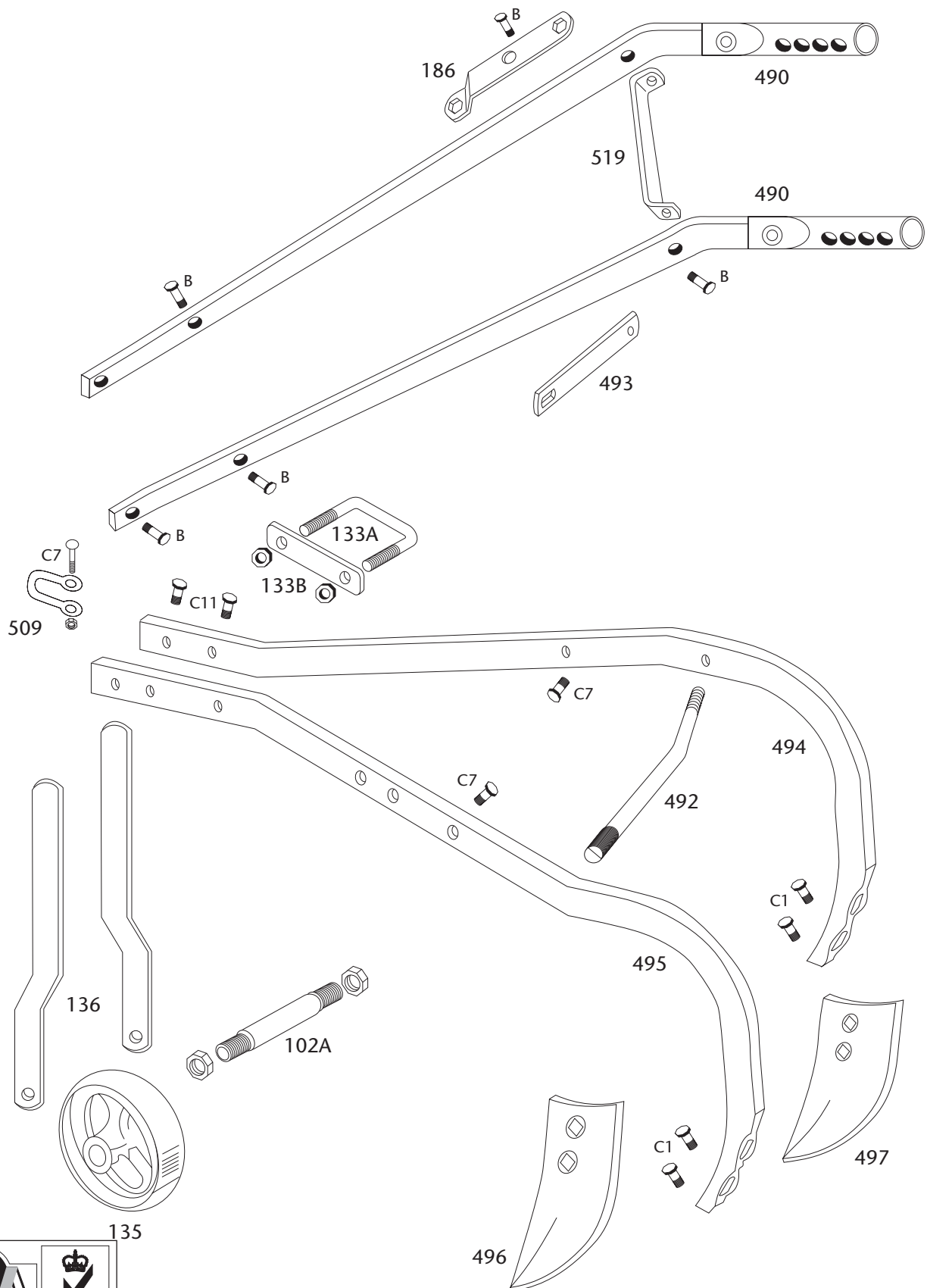
MC5 CULTIVATOR



MC5 CULTIVATOR PARTS LIST

PART No.	DESCRIPTION	Mass Kgs
102A	AXLE c/w 2 NUTS	0.17
135	WHEEL (150mm) CAST IRON 4 SPOKE	1.30
186	SPANNER MB	0.24
407	HANDLE BAR WITH GRIP CULTIVATOR RH	2.70
408	HANDLE BAR WITH GRIP CULTIVATOR LH	2.70
409	HILLER RH	1.56
410	HILLER LH	1.56
411	HILLER ARM	1.30
413	UNIVERSAL SHARE ARM	1.35
418A	STAY HANDLE TO BEAM CULTIVATOR RH	0.41
418B	STAY HANDLE TO BEAM CULTIVATOR LH	0.41
420	SWEEP 10" (250mm)	0.88
421	SWIVEL BRACKET RH	1.07
422	SWIVEL BRACKET LH	1.07
423	TYNE 3" (75mm)	0.67
424	WHEEL ARM FOR CULTIVATOR (PAIRS)	1.74
425	WHEEL (150mm) AND CULTIVATOR ARM ASSEMBLY	3.56
451	BACKBONE AND DRAWLINK	4.05
452	BOTTOM SLEDGE	0.87
453	EXPANDING BEAM MC5 RH	2.95
454	EXPANDING BEAM MC5 LH	2.95
455	EXPANDING CRANK LEVER ASSEMBLY	0.64
456	EYE EXPANDING LINK	0.29
457	EYE PLATE	0.18
460	HAND LEVER	0.59
461	HINGE PLATE	0.21
464	RATCHET	1.06
465	RATCHET BRACKET	0.57
466	SLIDE BRACKET MC5	0.11
467	SLOTTED STAY	0.61
468	SPINDLE	0.82
469	SPINDLE BEARING PLATE	0.21
470	SPINDLE CROSS BAR	0.58
471	TOP SLEDGE	0.62

MEALIE BRAND CS2 CULTIVATOR PARTS



* See parts list for correct sizes





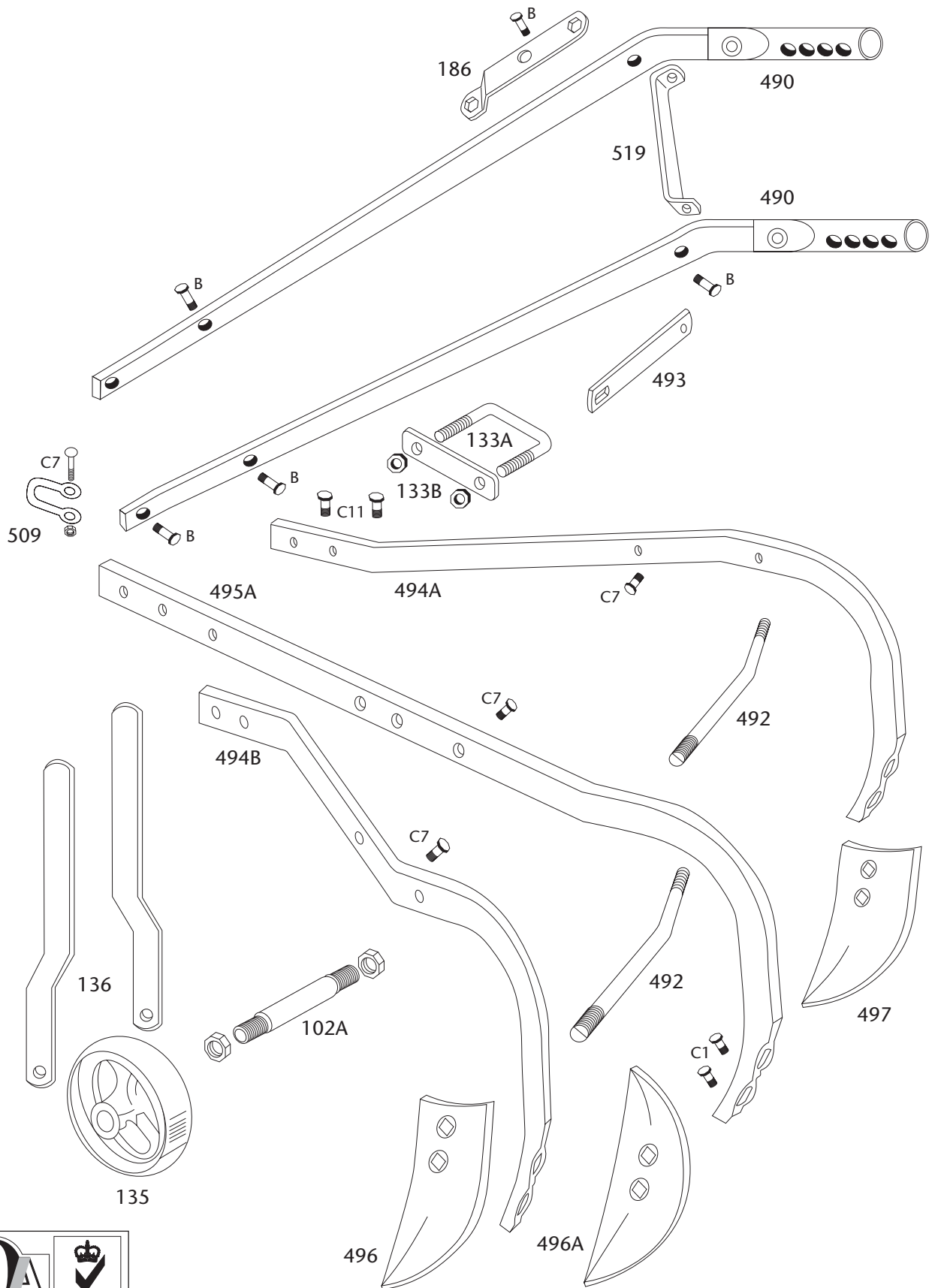
MEALIE BRAND CS2 CULTIVATOR



CS2 CULTIVATOR PARTS LIST

PART No.	DESCRIPTION	Mass Kgs
102A	AXLE c/w 2 NUTS	0.17
133	U CLAMP ASSEMBLY	0.45
135	WHEEL (150mm) CAST IRON 4 SPOKE	1.30
136	WHEEL ARM (PAIR) MB200/250	2.25
186	SPANNER MB	0.24
490	CS3/CS2 CULTIVATOR HANDLE BAR with GRIP RH/LH	2.18
492	FRAME BOLT UNIVERSAL	0.64
493	HANDLE STAYS UNIVERSAL CS2/CS3	0.40
494	FRAME SMALL RH (CS2)	6.72
495	FRAME MAIN CS3	6.72
496	TYNE SMALL UNIVERSAL (LIGHT SHOVEL)	1.02
496A	TYNE SMALL REVERSIBLE (OPTIONAL)	0.95
497	TYNE LARGE (HEAVY SHOVEL)	1.20
509	DRAW LINK	0.29
519	SPREADER BAR CS/HWR	0.57

MEALIE BRAND CS3 CULTIVATOR PARTS



* See parts list for correct sizes





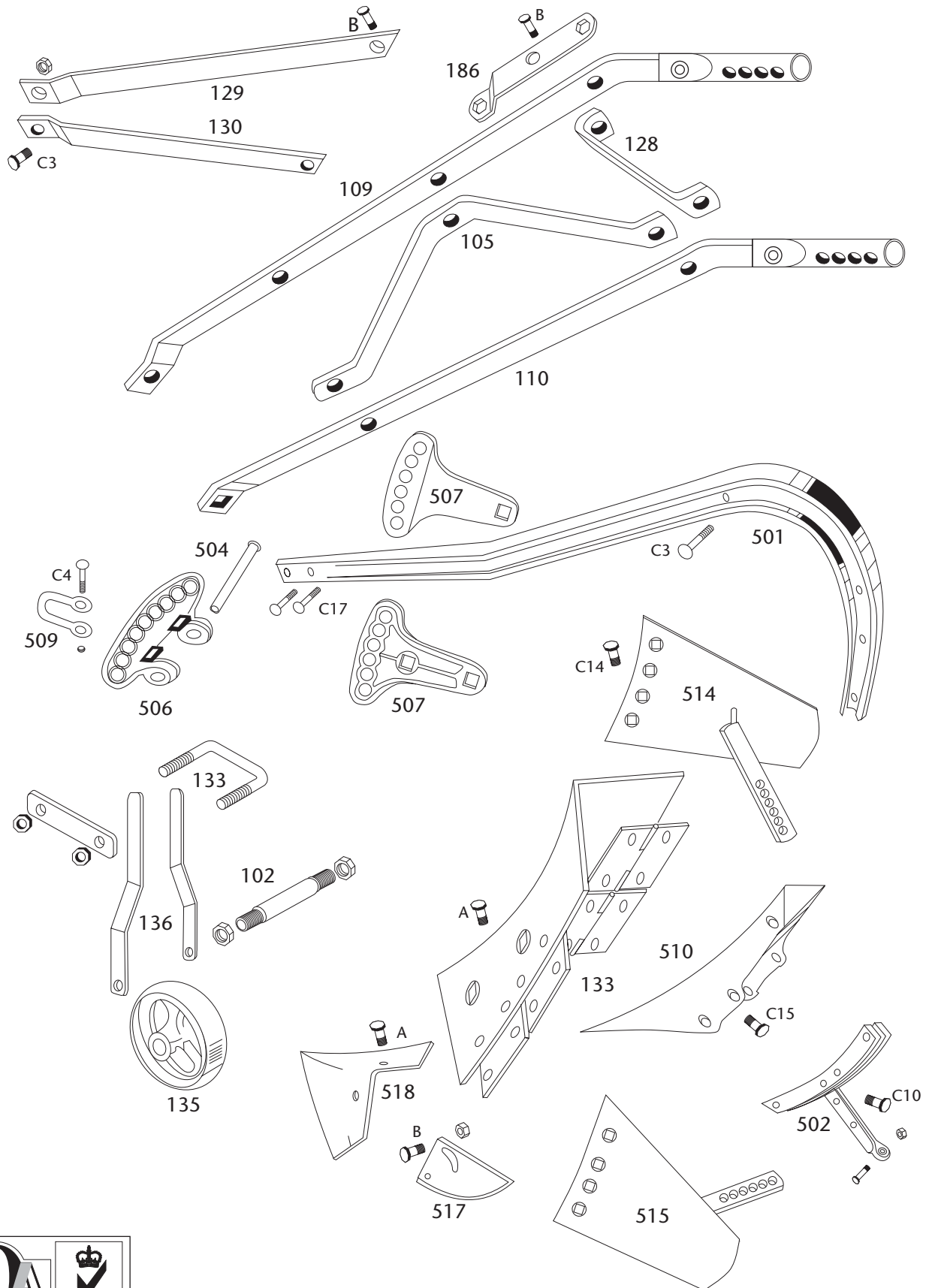
MEALIE BRAND CS3 CULTIVATOR



CS3 CULTIVATOR PARTS LIST

PART No.	DESCRIPTION	Mass Kgs
102A	AXLE c/w 2 NUTS	0.17
133B	U CLAMP PLATE	0.24
135	WHEEL (150mm) CAST IRON 4 SPOKE	1.30
136	WHEEL ARM (PAIR) MB200/250	2.25
186	SPANNER MB	0.24
490	CS3/CS2 CULTIVATOR HANDLE BAR WITH GRIP RH/LH	2.18
492	FRAME BOLT UNIVERSAL	0.64
493	HANDLE STAYS UNIVERSAL CS2/CS3	0.40
494A	FRAME SMALL LH (CS3) RH	5.56
494B	FRAME SMALL RH (CS3) LH	5.56
495A	FRAME MAIN (CS3)	6.72
496	TYNE SMALL UNIVERSAL (LIGHT SHOVEL)	1.02
496A	TYNE SMALL REVERSABLE (OPTIONAL)	0.95
497	TYNE LARGE (HEAVY SHOVEL)	1.20
509	DRAW LINK	0.29
519	SPREADER BAR	0.57

MEALIE BRAND HIGH WING RIDGER PARTS



* See parts list for correct sizes





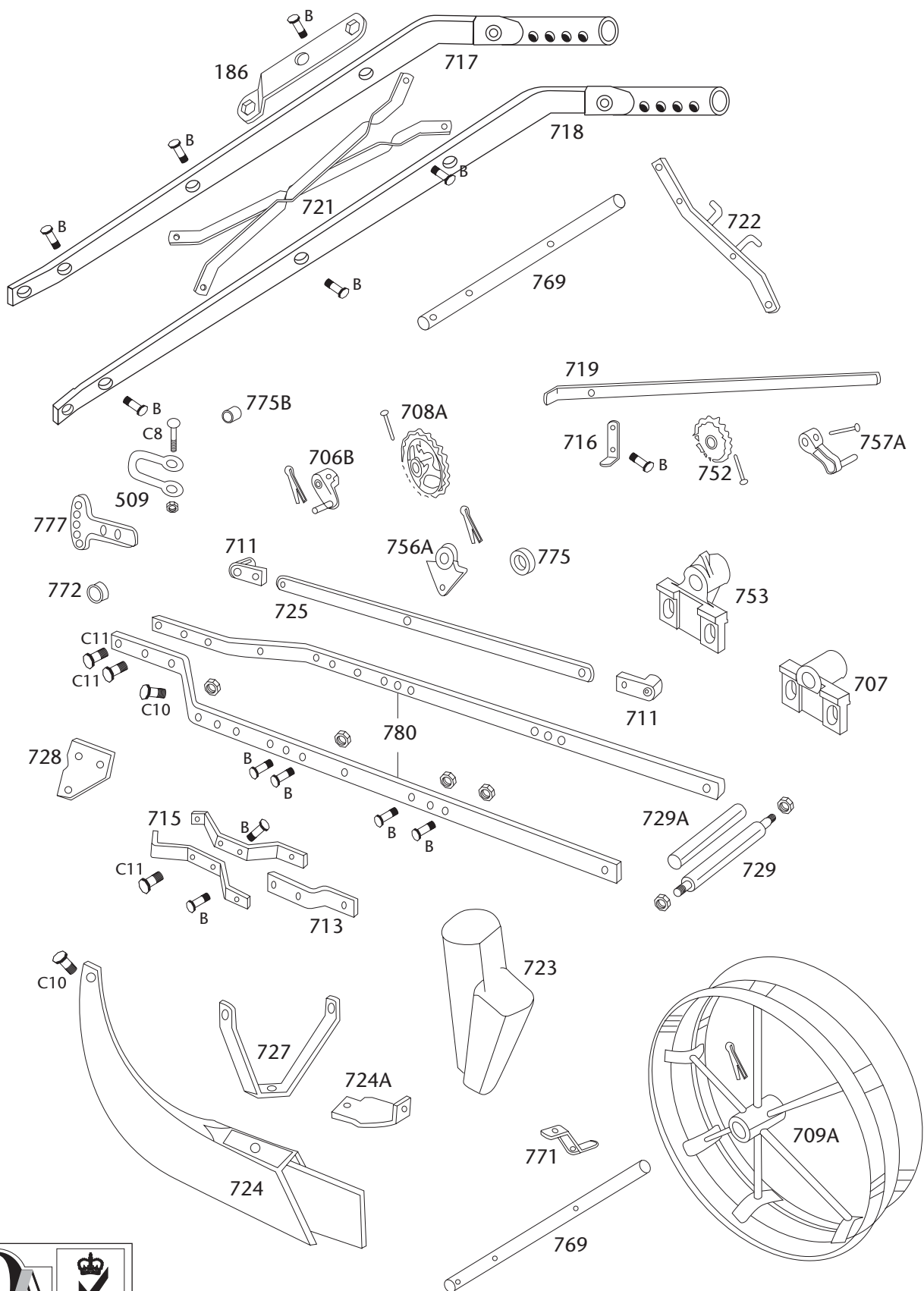
MEALIE BRAND HIGH WING RIDGER



HIGH WING RIDGER PARTS LIST

PART No.	DESCRIPTION	Mass Kgs
017	RIDGER ATTACHMENT ASSEMBLY	18.80
102A	AXLE c/w 2 NUTS	0.17
105	CROSS BRACE	0.85
110	HANDLE BAR WITH GRIP L/H	2.20
113	HANDLE BAR WITH GRIP R/H (SINGLE HOLE)	2.20
114	HANDLE ASSEMBLY COMPLETE WITH PART No. 113	6.80
128	SPREADER BAR	0.50
129	HANDLE STAY R/H	0.37
130	HANDLE STAY L/H	0.37
133	U CLAMP ASSEMBLY	0.45
135	WHEEL (150mm) CAST IRON 4 SPOKE	1.30
136	WHEEL ARM (PAIR) MB200/250	2.25
138	WHEEL (150mm) & ARM ASSEMBLY MB200/250	3.72
186	SPANNER MB	0.24
501	BEAM HWR	10.23
502	BEAM EXTENSION ASSEMBLY	2.75
503	BREAST PLATE & HINGES	2.26
504	CLEVIS PIN	0.10
506	CROSS CLEVIS	0.74
507	DEPTH CLEVIS (EACH)	0.76
508	DEPTH/CROSS CLEVIS ASSEMBLY	2.67
509	DRAW LINK	0.29
510	FROG HWR	1.36
514	HIGH WING ASSEMBLY RH	2.40
515	HIGH WING ASSEMBLY LH	2.40
516	HINGE ASSEMBLY (2 PER WING) EACH	0.20
517	RUDDER	0.71
518	SHARE HWR	1.56

MEALIE BRAND PLANTER (Pitman Drive) PARTS



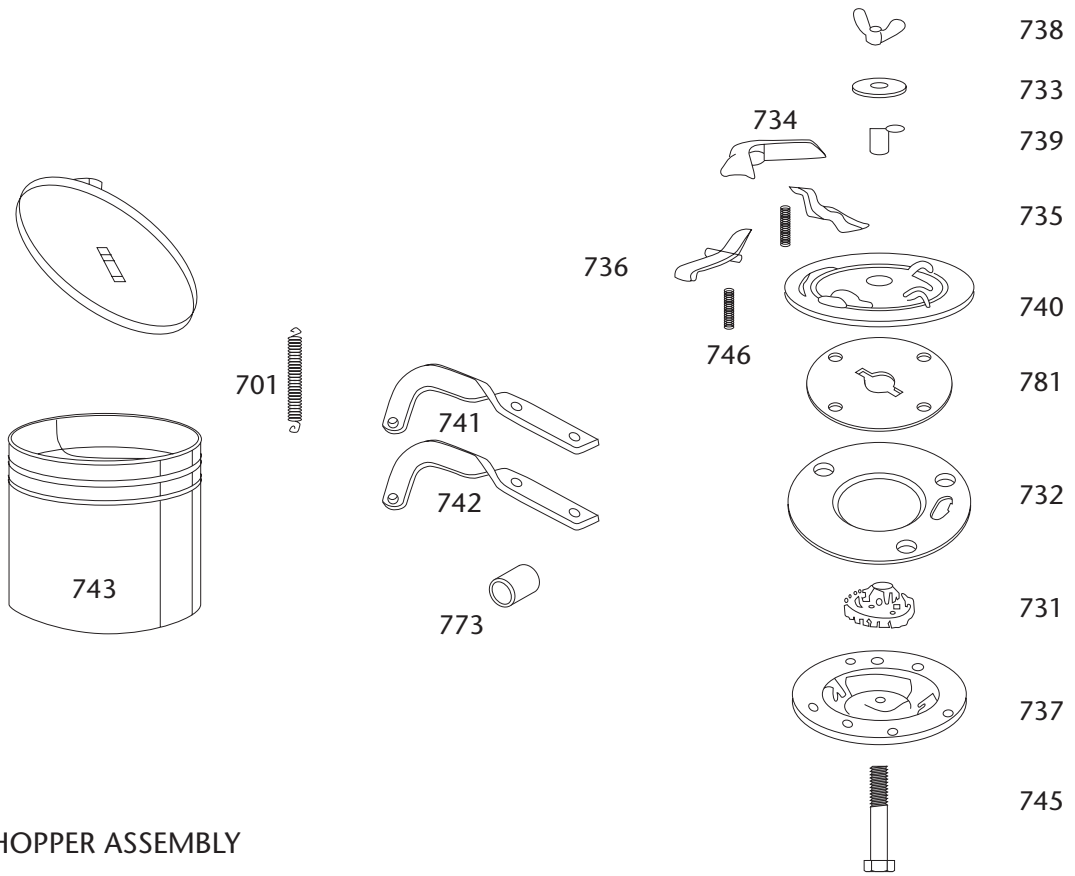
* See parts list for correct sizes



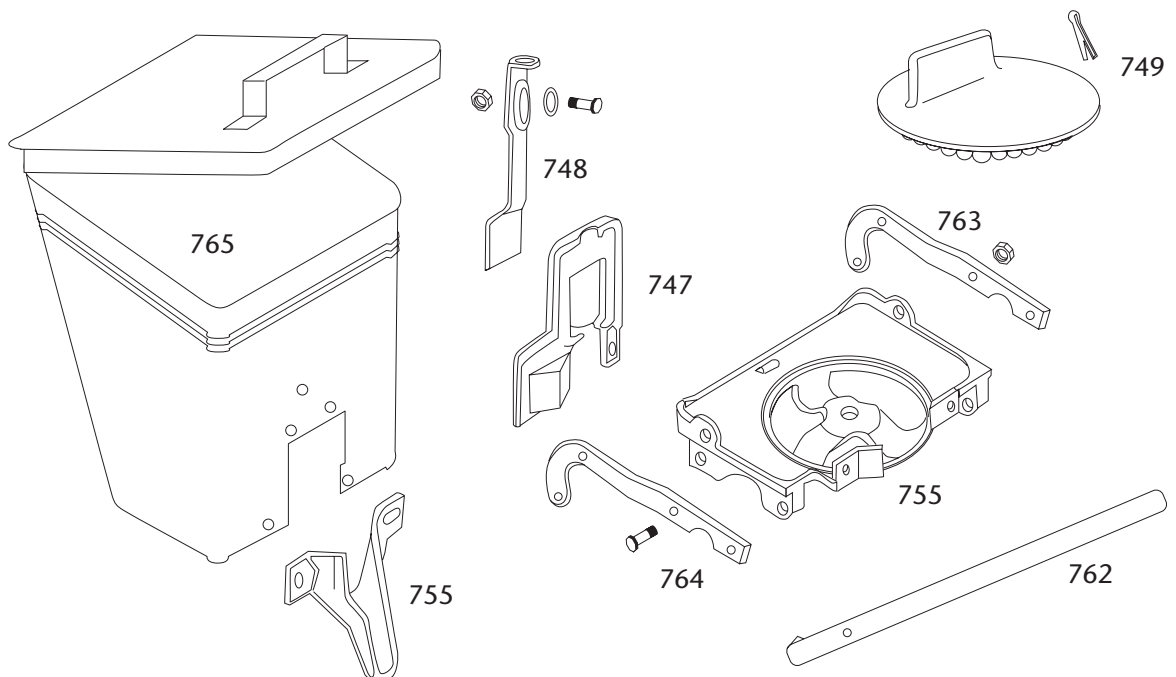
MEALIE BRAND PLANTER (Pitman Drive) PARTS



SEED HOPPER ASSEMBLY



FERTILISER HOPPER ASSEMBLY



* See parts list for correct sizes



MEALIE BRAND PLANTER (Pitman Drive)

PLANTER (Pitman Drive) PARTS LIST

PART No.	DESCRIPTION	Mass Kgs
SINGLE ROW PLANTERS		
80	PLANTER WITH FERT ATTACH (PITMAN DRIVE)	56.50
81	PLANTER W/OUT FERT ATTACH (PITMAN DRIVE)	51.20
82	FERTILIZER HOPPER COMPLETE	5.30
83	SEED HOPPER COMPLETE (WITH SEED PLATES)	11.00
84	ROW MARKER - DISC TYPE (PAIR)	6.40
186	SPANNER MB	0.24
509	DRAW LINK	0.29
701	SPRING FOR LID	0.03
706	DRIVE CRANK (20mm SHAFT) (SPARES ONLY)	0.24
706A	DRIVE CRANK (16mm SHAFT) (SPARES ONLY)	0.24
706B	DRIVE CRANK (17mm SHAFT)	0.25
707	BEARING, DRIVE SHAFT (20mm SHAFT) (SPARES ONLY)	0.31
707A	BEARING, DRIVE SHAFT (16mm SHAFT) (SPARES ONLY)	0.32
707B	BEARING DRIVE SHAFT (17mm SHAFT)	0.34
708	DRIVE GEAR (SEED) 16mm SHAFT (SPARES ONLY)	0.52
708A	DRIVE GEAR (SEED) 17mm SHAFT	0.47
709A	WHEEL ASSEMBLY (17mm) SHAFT	7.05
710	SHAFT, TRACTION WHEEL (20mm) (SPARES ONLY)	0.69
711	PITMAN EYE	0.19
713	OPENER, STANDARD	0.35
715	SUPPORT, OPENER STANDARD	0.56
716	SUPPORT, THROW-OUT LEVER	0.19
717	HANDLE BAR WITH GRIP PLANTER RH	2.20
718	HANDLE BAR WITH GRIP PLANTER LH	2.20
719	LEVER, THROW-OUT SEED CAN	0.97
721	CROSS BRACE PLANTER	0.66
722	HANDLE BRACE RH (WITH THROW-OUT LEVER RETAINING PINS)	0.39
722A	HANDLE BRACE LH (WITH THROW-OUT LEVER RETAINING PINS)	0.39
723	SPOUT, DOUBLE HOPPER	0.79
724	RUNNER, ASSEMBLY	3.72
724A	BRACKET, DOUBLE SPOUT TO RUNNER ASSEMBLY	0.08
725	PITMAN ARM	0.57
726	PITMAN ARM ASSEMBLY (SINGLE ARM WITH CENTRE & PITMAN EYE)	1.16
727	STABILISER BAR	0.46
728	BRACKET (MAIN FRAME TO RUNNER ASSEMBLY)	0.12
729	BOLT MAIN FRAME	0.19
729A	SPACER, MAIN FRAME BOLT	0.14

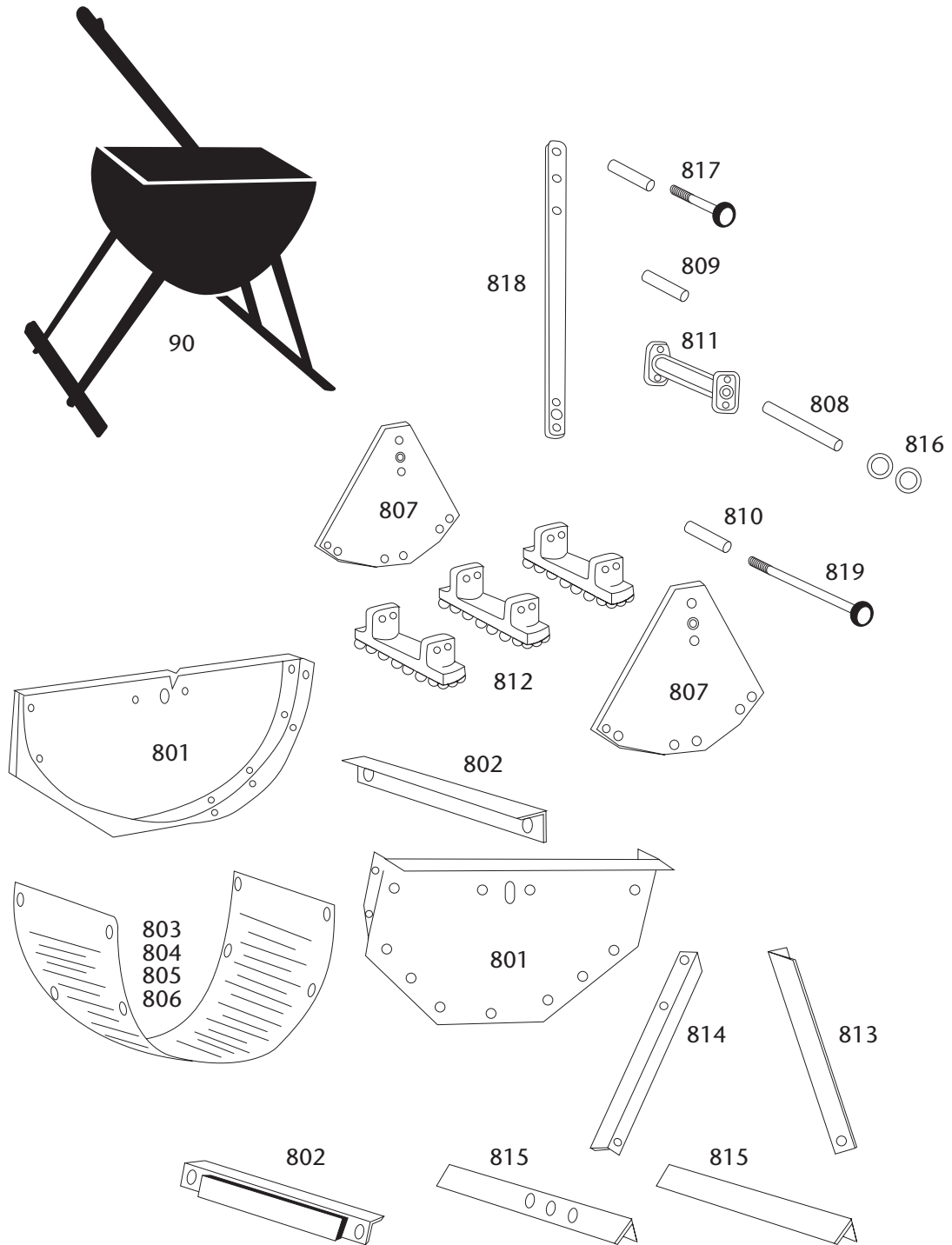


MEALIE BRAND PLANTER (Pitman Drive)



PART No.	DESCRIPTION	Mass Kgs
731	GEAR WHEEL (FOR SEED CAN)	1.02
732	CLAMP RING	1.28
733	WASHER (CASTING)	0.19
734	CAP, CUT-OFF HOUSING	0.15
735	KNOCKER (MAIZE)	0.05
735A	KNOCKER (SORGHUM) (OPTIONAL)	0.04
736	CUT-OFF (CORN)	0.05
737	BOTTOM (SEED HOPPER)	1.76
738	WING NUT, BRASS M12	0.03
739	SLEEVE BEARING	0.11
740	CUT-OFF HOUSING	1.88
741	HINGE BAR RH (SEED CAN)	0.25
742	HINGE BAR LH (SEED CAN)	0.26
743	SEED HOPPER ONLY (WITH LID AND SPRING)	0.90
745	BOLT, SPECIAL c/w WING NUT	0.12
746	SPRING FOR KNOCKER	0.01
747	HOPPER FRONT, FERTILIZER	0.36
748	HOPPER GATE, FERTILIZER	0.24
749	DISC (BEVEL GEAR FOR FERTILISER CAN)	0.85
752	BEVEL PINION (FOR FERTILISER SHAFT)	0.30
752A	BEVEL PINION (FOR FERTILISER SHAFT) (17mm)	0.30
753	BEARING : DRIVE SHAFT, FERTILISER HOPPER (16mm) (SPARES ONLY)	0.42
753A	BEARING : DRIVE SHAFT : FERTILISER HOPPER (17mm)	0.41
754	BOTTOM, FERTILISER HOPPER	1.44
755	SPOUT, FERTILISER HOPPER	0.30
756	EYE, CONNECTION (16mm)	0.20
756A	EYE, CONNECTION (17mm)	0.20
757	DRIVE CRANK, FERTILISER HOPPER (16mm) (SPARES ONLY)	0.25
757A	DRIVE CRANK, FERTILISER HOPPER (17mm)	0.25
759	DRIVE SHAFT UNIVERSAL (16mm) (SPARES ONLY)	0.42
762	LEVER, THROW-OUT FERTILISER CAN	0.66
763	HINGE BAR : RH (FERTILISER CAN)	0.33
764	HINGE BAR : LH (FERTILISER CAN)	0.33
765	FERTILISER HOPPER ONLY (WITH LID AND SPRING)	1.20
769	DRIVE SHAFT UNIVERSAL (17mm)	0.44
771	BRACKET, HOPPER HEIGHT ADJ	0.09
772	SPACER RUNNER BRACKET TO MAIN FRAME (7mm LONG)	0.01
775	SPACER FERTILISER DRIVE SHAFT (8mm LONG)	0.60
775A	SPACER FERTILISER DRIVE SHAFT (23mm LONG)	0.05
777	DEPTH CLEVIS	0.45
780	MAIN FRAME	3.81
781	SEED PLATE, MAIZE - 4 HOLEx16mm DIA	0.84
784	SEED PLATE, MAIZE - 6 HOLEx16mm DIA	0.87
785	SEED PLATE, SORGHUM - 12 HOLEx6mm DIA	0.79
786	BLANK PLATE	1.00
787	SEED PLATE MAIZE 8 HOLE x16mm DIA	0.85

MEALIE BRAND GROUNDNUT SHELLER PARTS



* See parts list for correct sizes



MEALIE BRAND GROUNDNUT SHELLER

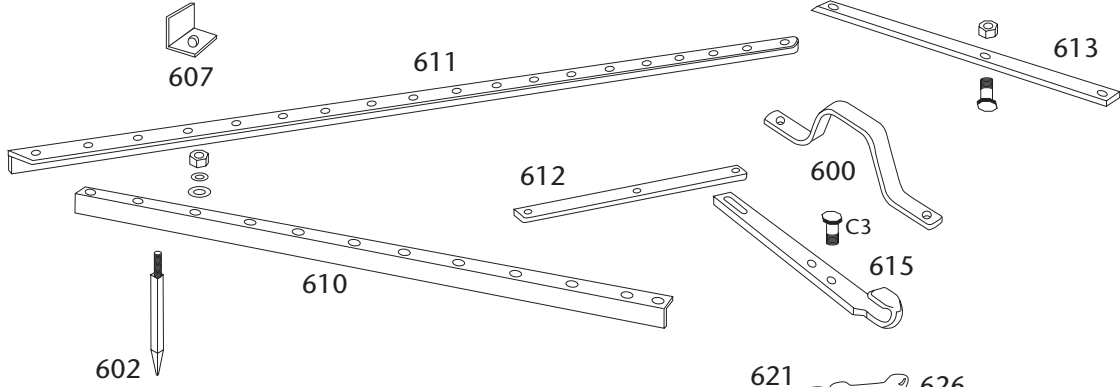


GROUNDNUT SHELLER PARTS LIST

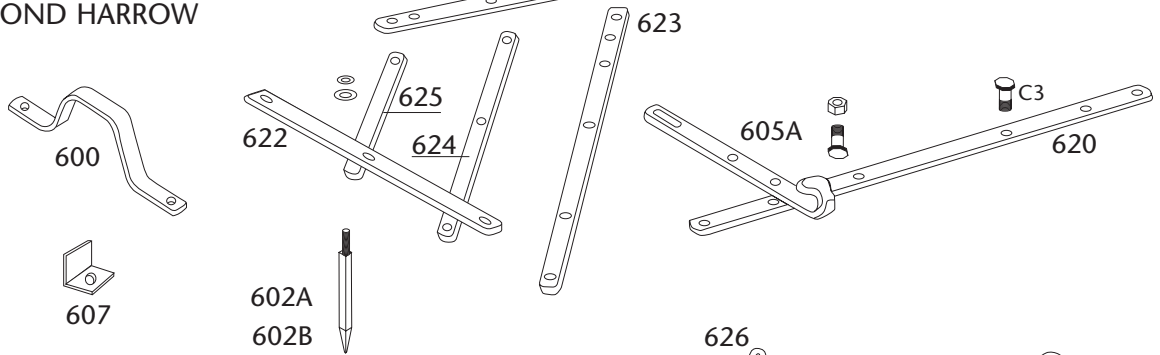
PART No.	DESCRIPTION	Mass Kgs
90	GROUND NUT SHELLER c/w 1 SCREEN TO CUST. CHOICE	37.10
801	SIDE PLATE ASSEMBLY	5.70
802	END ANGLE ASSEMBLY	0.66
803	9.5mm OVAL HOLE SCREEN PLATE (3/8")	4.08
804	11.1mm OVAL HOLE SCREEN PLATE (7/16")	4.02
805	12.7mm OVAL HOLE SCREEN PLATE (1/2")	4.02
806	15.9mm OVAL HOLE SCREEN PLATE (5/8")	3.93
807	QUADRANT PLATE	1.09
808	SLEEVE	0.22
809	SPACER LONG	0.06
810	SPACER SHORT	0.05
811	BEARING ASSEMBLY	0.54
812	BEATER	1.90
813	LEG RH	1.26
814	LEG LH	1.26
815	BRACE	1.07
816	FLAT WASHER GNS	0.02
817	HANDLE GNS	0.04
818	LEVER GNS	2.20
819	BEARING BOLT	0.56

MEALIE BRAND HARROW PARTS

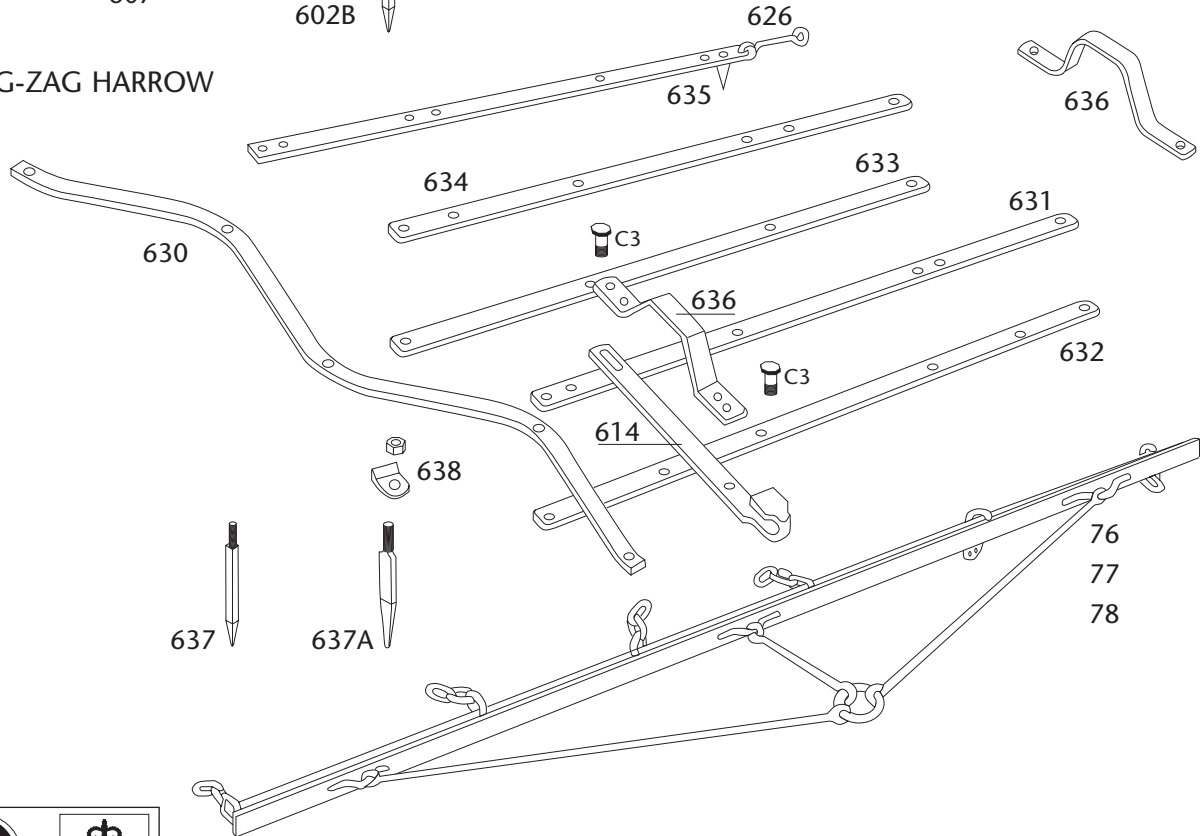
MAUN/TRIANGULAR HARROW



DIAMOND HARROW



ZIG-ZAG HARROW



* See parts list for correct sizes

MEALIE BRAND HARROWS



MAUN LIGHT TRIANGULAR HARROW (LIGHT) 16 TEETH PARTS LIST

PART No.	DESCRIPTION	Mass Kgs
600	LIGHT SLEDGE	0.37
602	16mm HARROW TEETH (with nut & washers)	0.35
607	16mm WASHER	0.01
610	SIDE BEAM	3.66
611	REAR BEAM	0.44
612	FRONT CROSS BAR	0.58
613	REAR CROSS BAR	0.44
615	DRAW HOOK MEDIUM/HEAVY	1.36



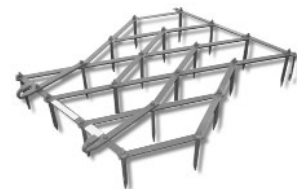
MEALIE BRAND TRIANGULAR HARROW (HEAVY) 35x16mm TEETH

600	LIGHT SLEDGE	0.37
601	REAR BEAM	0.65
602	16mm HARROW TEETH SQUARE	0.35
603	SIDE BEAM	5.00
604	FRONT CROSS BAR	0.60
605	DRAW HOOK	0.60
606	REAR CROSS BAR	0.52
607	16mm WASHER	0.01



MEALIE BRAND DIAMOND HARROW

600	LIGHT SLEDGE	0.37
602A	16mm HARROW TEETH (with nut & washer-53mm)	0.35
602B	16mm HARROW TEETH (with nut & washer-25mm)	0.36
605A	DIAMOND HARROW DRAW HOOK	1.13
620	FRONT CROSS BEAM	1.02
621	REAR CROSS BEAM	1.08
622	INCLINED CROSS BEAM	0.81
623	LONG HARROW BEAM	2.26
624	MEDIUM HARROW BEAM	1.18
625	SHORT HARROW BEAM	0.60
626	CONNECTING LINK (INNER ONLY)	0.16





MEALIE BRAND HARROWS

MEALIE BRAND ZIG-ZAG HARROW

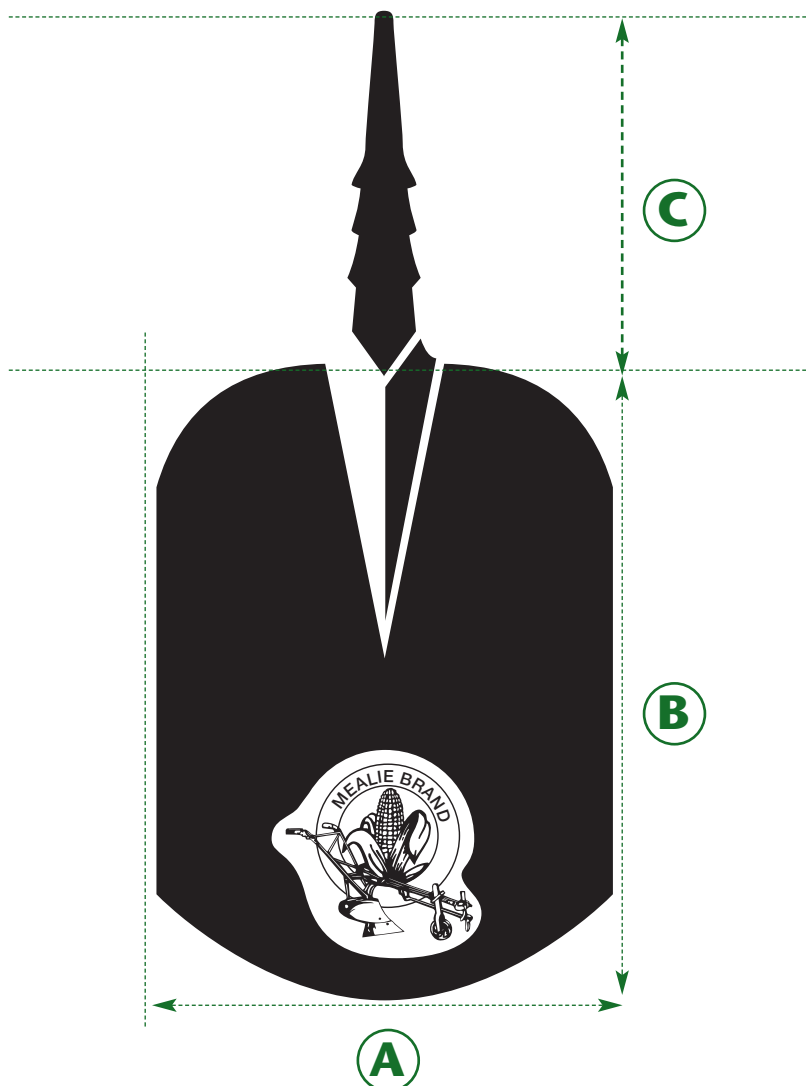
PART No.	DESCRIPTION	Mass Kgs
614	DRAWHOOK MEDIUM/HEAVY	1.30
626	CONNECTING LINK	0.16
630	BEAM ZIG-ZAG	3.96
631	SECOND CROSS BEAM	1.40
632	FRONT CROSS BEAM	1.40
633	THIRD CROSS BEAM	1.40
634	FOURTH CROSS BEAM	1.46
635	REAR CROSS BEAM	1.47
636	HEAVY SLEDGE	0.94
637	20mm HARROW TEETH (with nut & sq. washer)	
637A	20mm HARROW TEETH (with nut & sq. washer)	
638	20mm WASHER	

DRAW BARS FOR HARROWS

76	TWO SECTION HITCH	13.60
77	THREE SECTION HITCH	23.40
78	FOUR SECTION HITCH	32.60



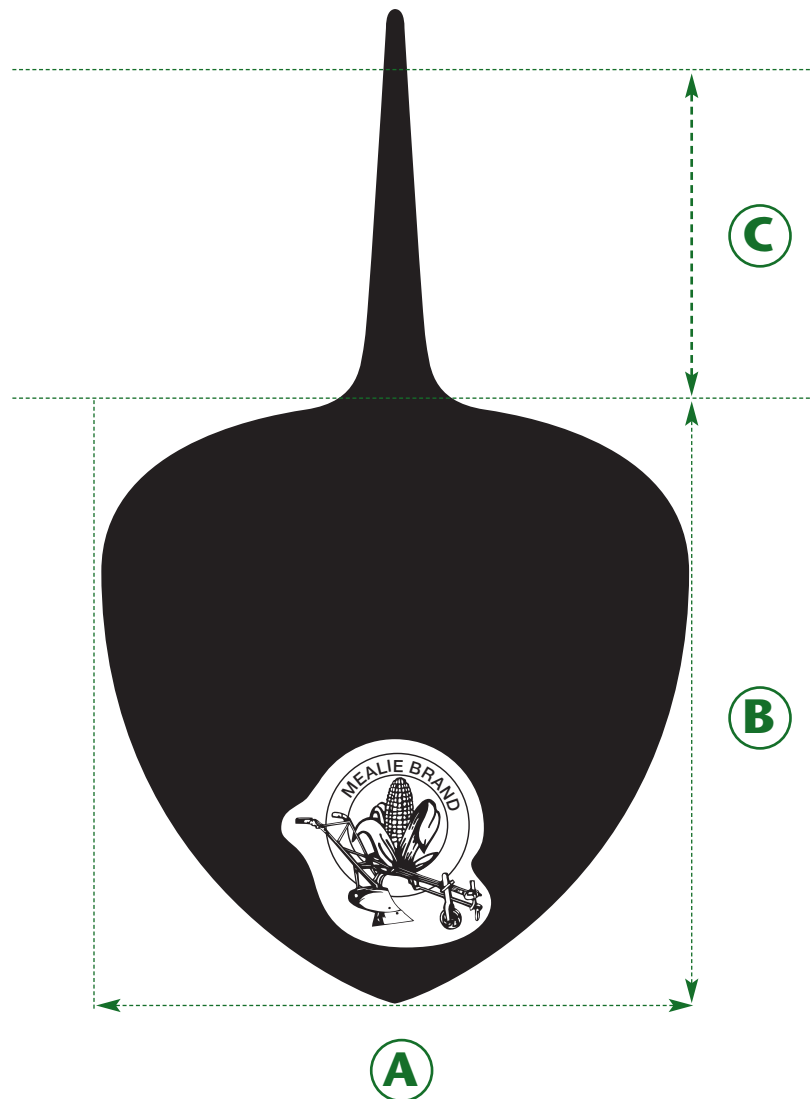
MEALIE BRAND SPADE-SHAPED TANG HOE



SPECIFICATIONS

CODE	TARGET WEIGHT (grams)	MIN WEIGHT (grams)	MAX WEIGHT (grams)	WEIGHT (pounds)	A	B	C
11 ¹ / ₂	680 g	650 g	695 g	1 ¹ / ₂ lbs	143 mm	310 mm	100 mm
12 ¹ / ₂	1130 g	1100 g	1145 g	2 ¹ / ₂ lbs	175 mm	255 mm	115 mm
TOLERANCE					±2	±2	±5
* Non-standard – special order only							
* 11	450 g			1 lb	120 mm	187 mm	110 mm
* 12	900 g			2 lbs	157 mm	240 mm	120 mm
* 13	1300 g			3 lbs	190 mm	280 mm	125 mm
*14	1800 g			4 lbs	110 mm	230 mm	115 mm
TOLERANCE					±2	±2	±5

MEALIE BRAND HEART-SHAPED TANG HOE

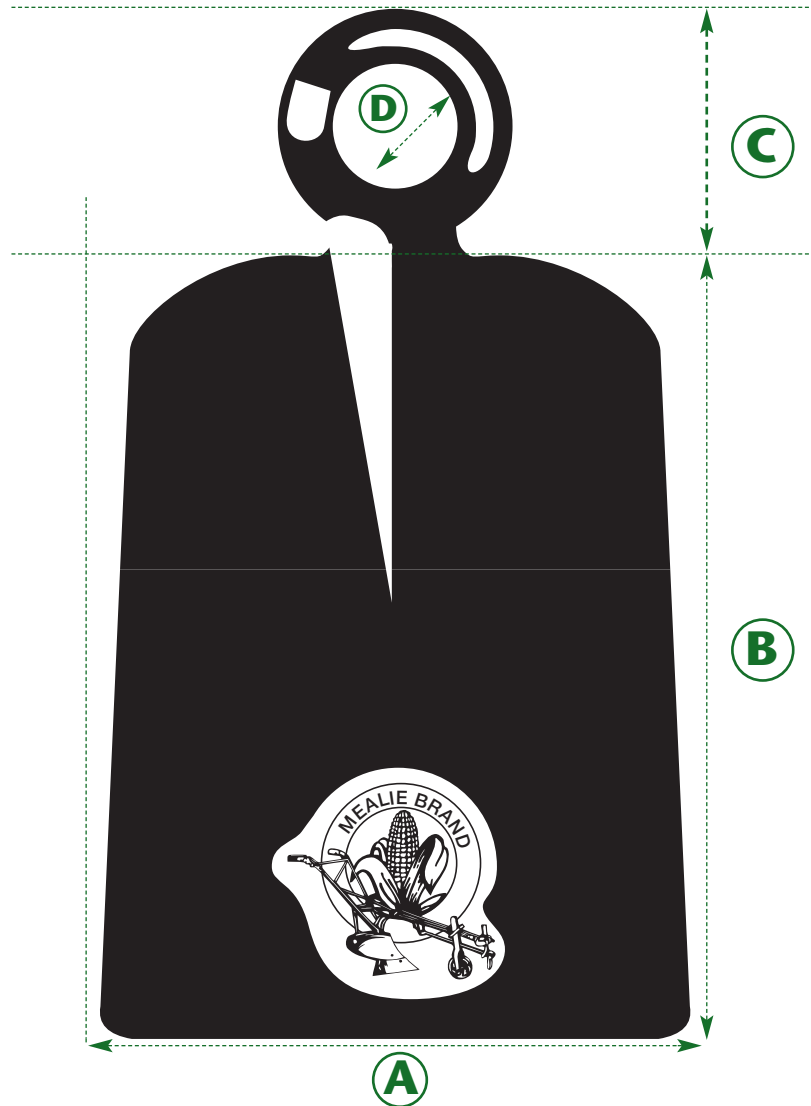


SPECIFICATIONS

CODE	TARGET WEIGHT (grams)	MIN WEIGHT (grams)	MAX WEIGHT (grams)	WEIGHT (pounds)	A	B	C
21 ¹ / ₂	700 g	510 g	790 g	1 ¹ / ₂ lbs	182 mm	200 mm	105 mm
21 ¹ / ₄	570 g	545 g	580 g	1 ¹ / ₄ lbs	170 mm	190 mm	105 mm
21 ³ / ₄	790 g	760 g	805 g	1 ³ / ₄ lbs	200 mm	215 mm	105 mm
TOLERANCE					±2	±2	±5



MEALIE BRAND RAISED EYE RING HOE



SPECIFICATIONS

CODE	TARGET WEIGHT (grams)	MIN WEIGHT (grams)	MAX WEIGHT (grams)	MAX WEIGHT (pounds)	A	B	C	D (Dia)
31 ¹ / ₂	700 g	670 g	715 g	1 ¹ / ₂ lbs	118 mm	182 mm	60 mm	43 mm
32 ¹ / ₂	1130 g	1100 g	1145 g	2 ¹ / ₂ lbs	145 mm	215 mm	60 mm	43 mm
TOLERANCE					±2	±2	±1	±1
* Non-standard – special order only								
* 32	900 g			2 lbs	130 mm	200 mm	60 mm	43 mm
* 33	1300 g			3 lbs	175 mm	225 mm	80 mm	45 mm
TOLERANCE					±2	±2	±1	±1

MEALIE BRAND SUNKEN HEAD (CEYLON TYPE) HOE



SPECIFICATIONS

CODE	TARGET WEIGHT (grams)	MIN WEIGHT (grams)	MAX WEIGHT (grams)	WEIGHT (pounds)	A	B	C	D (Dia)
52 ^{1/2}	1130 g	1100 g	1145 g	2 ^{1/2} lbs	155 mm	205 mm	30 mm	43 mm
TOLERANCE					±2	±2	±1	±1
* Non-standard – special order only								
*52	900 g			2 ^{1/2} lbs	155 mm	205 mm	30 mm	43 mm
TOLERANCE					±2	±2	±1	±1





AFRICA'S No. 1

MEALIE BRAND

ZIMFLOW Limited

Steelworks Road, Heavy Industrial Sites, PO Box 1059, Bulawayo, Zimbabwe
Telephone (263-9) 71363/4, Fax (263-9) 71363/4
email mdsec@zimplow.co.zw



www.mealiebrand.co.zw